

TMW-1000

Quick installation guide

Software

Tracemyworld utility:

- Tracemyworld_GPS_Util_installer.exe

Windows drivers:

- CP210x_Universal_Windows_Driver(Win10).zip
- CP210x_Windows_Drivers(WIN7_WIN8).zip

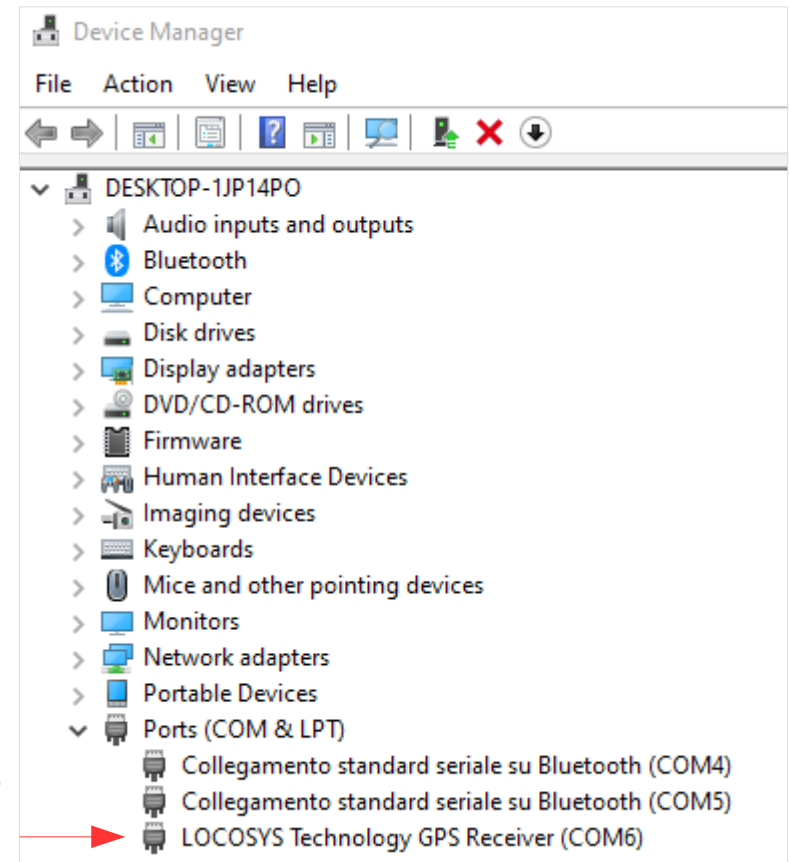
TMW-1000

Quick installation guide

Pre-installation

Apply this step **only** if you have already the GPS drivers installed but old and/or not working:

1. Open the **Ports (COM & LPT)** section under Control panel → Hardware and Sound → Devices and Printers → **Device Manager**
2. Connect the GPS logger and switch it on
3. GPS Drivers should be visible in the list: right-click on the item to uninstall and remove the old drivers

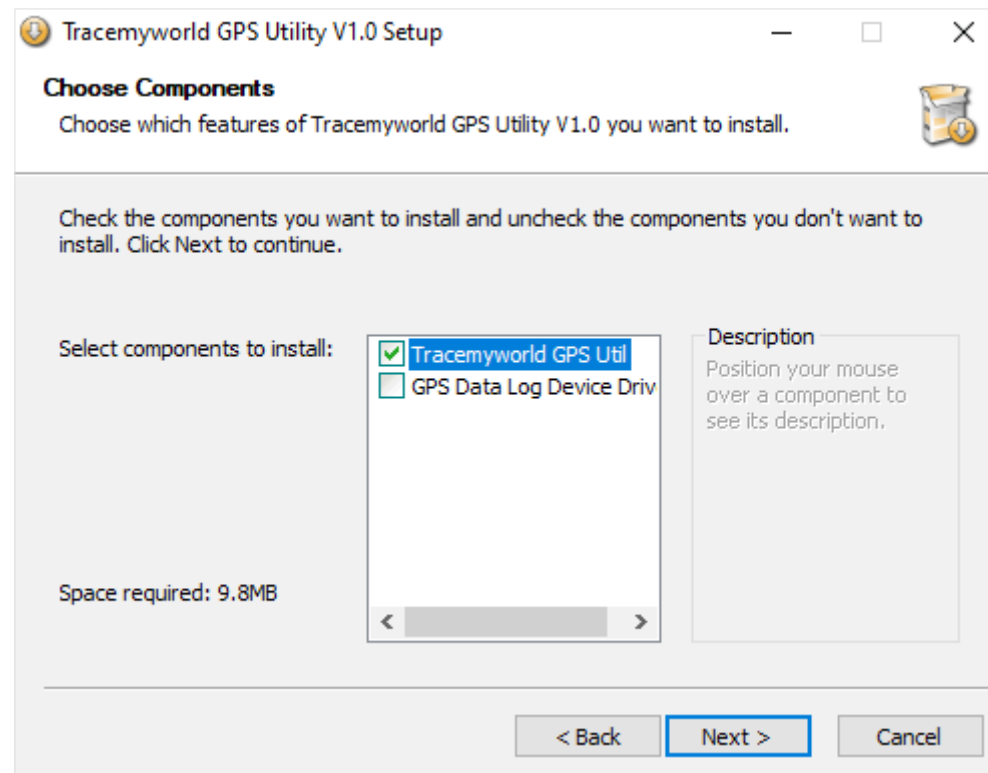


TMW-1000

Quick installation guide

Tracemyworld utility installation (skip if you already have it installed)

Download and Run Tracemyworld_GPS_Util_installer.exe
And **only** install the Utility (uncheck the GPS Data drivers)

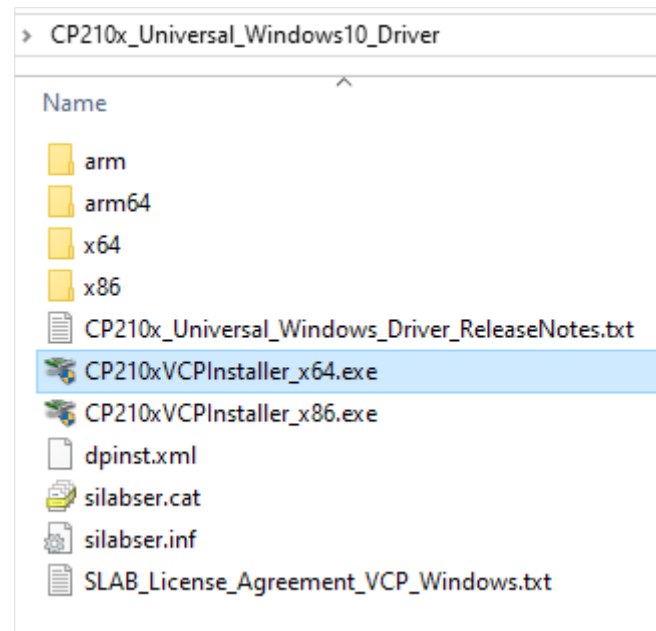


TMW-1000

Quick installation guide

GPS drivers installation

- Download the drivers package for your Windows version
- Unzip the installation package on your PC
- Run the installer (determine if you have 32-bit or 64-bit Windows)



TMW-1000

Quick installation guide

Final steps

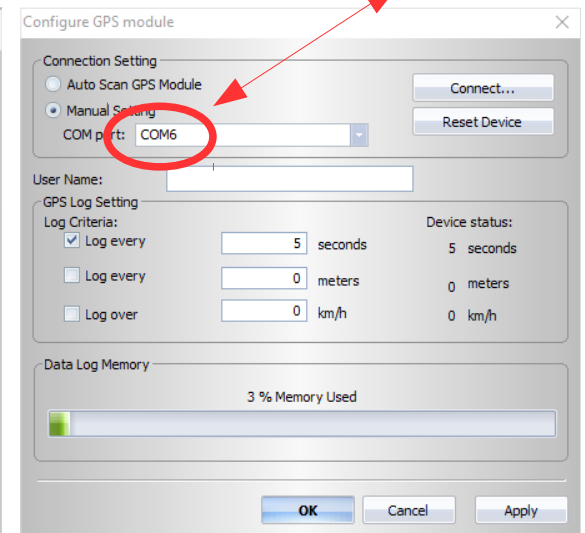
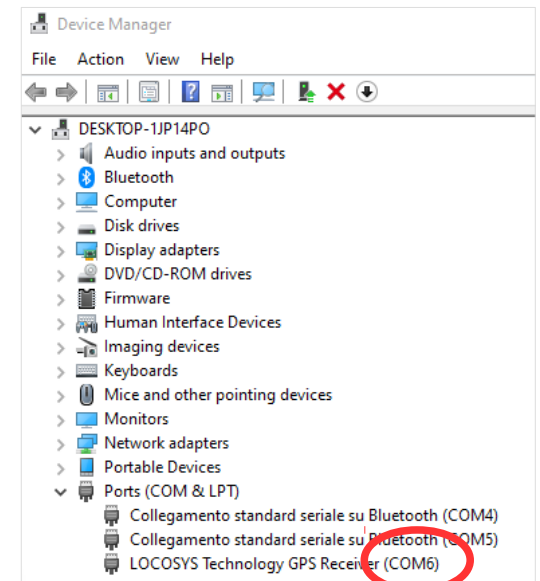
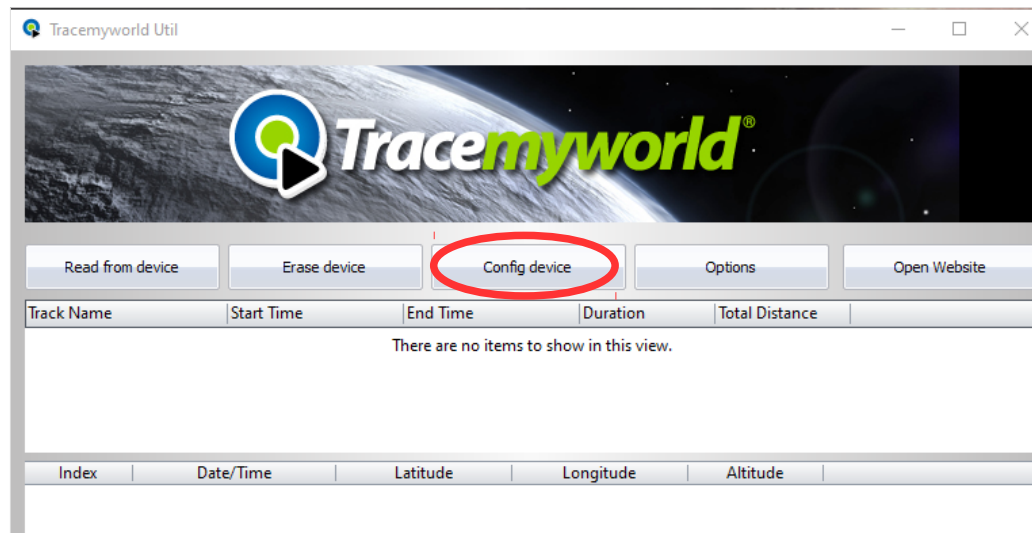
- Reboot the PC
- Launch Tracemyworld Utility
- Connect and switch on the GPS logger

TMW-1000

Quick installation guide

Configure port (if needed)

- Select **Config device**
- Manually configure the COM port: set the same Port given by the Device Manager



TMW-1000

Quick installation guide

Ready to Configure, Erase, Read or Export your data

Exported .GPX files can be visualied on

<https://www.gpsvisualizer.com>

or similar sites

