



2014 BIKES





The LOOK world is an ensemble of innovative products, shared passions, stories created by faithful champions, but above all it is a team of almost four hundred people, bringing together many skills, who collaborate throughout the year to design and produce the products that you will find on these pages.

Consistent ranges for all practices, and ever-functional refined forms will make our 2014 vintage an exceptional year.

It started well on the Tour de France, because out of the first ten in the general classification, seven of them were riding with LOOK pedals, and Daniel Navarro from the Cofidis team finished ninth on the 695.

The entire LOOK team wishes you an enjoyable read of this catalogue and the greatest cycling pleasure.

**Dominique Bergin,
Chairman and CEO**

This printed catalog is just a sample of what's new for 2013. For a complete overview of ALL LOOK products, please visit the LOOK Cycle website where you can download the full version of this catalog: www.lookcycle.com



In 1986, Greg Lemond won the Tour de France on the first LOOK carbon frame.

With almost 30 years of expertise at the highest level, our knowledge has become a benchmark in the professional sector – completely mastering the work involved with this material has enabled us to develop excellent products – innovation is our identity: LOOK invests 11% of its turnover each year in research and development to continue to offer the same innovative products to the demanding sports people and enthusiasts.



The creation of a carbon frame goes through an assembly stage of numerous pieces of carbon. For example, the 695 AEROLIGHT requires 508 pieces of carbon.



At LOOK, the carbon frames and accessories are made by hand. On average, around thirty hours are required to create one carbon frame.



After moulding, the frame and its components are carefully sanded to go through the finishing stages.



The finishing stages are very long: application of stencils to keep the parts which will stay visibly carbon, painting, anti-porousness testing, second stage of painting, removing stencils, adding decoration (transfers) and finally the application of the final varnish.



The LOOK research department (Nevers - France) is composed of 13 engineers and 1 person dedicated to monitoring technology and applying for patents.

COMMAND OF OUR PRODUCTION SITES

The production in our own factories gives LOOK perfect command of the different procedures in the production of its frames. This total control enables the development of innovative and exclusive production techniques as well as improved reactivity. With nearly 400 employees, this strategy is a real commitment and is the guarantee of revolutionary and irreproachable quality products. LOOK has always imposed a very strict quality charter, implementing tests above and beyond the standards in force. Each LOOK product is tested before, during and after production.



Frame fatigue test bench



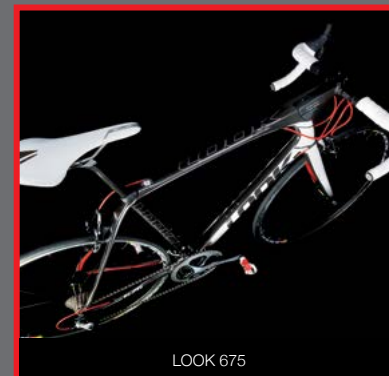
Keo Power fatigue test



Keo pedal axle usage test

LOOK AND INTEGRATION

To be at one with aesthetics and technology, with a unique objective: optimise performance and increase the pleasure of riding. LOOK does not design a bike as a collection of components, but as a single piece where the fluidity of the lines guide the reflection of the Research and Development department. LOOK innovates every day and follows its integration strategy. After years of development, LOOK now offers two levels of integration. Between the power of the 695, which has become a best-seller since its release in 2010 or the combination of sport and comfort united in the 675, integration is now accessible to everyone in the LOOK range.



LOOK 675



LOOK 695 AEROLIGHT

“A WORLDWIDE BENCHMARK”

LOOK is once again crossing the boundaries of technology to offer the most demanding cyclists the machine of their dreams. Maximum integration for increased pleasure in riding.

With a higher level of integration and unrivalled performances, the 695 has become a worldwide benchmark.

Today, LOOK is going even further. Integrated Aerobrakes, 20% more powerful, new adjustable Aerostem, new Ultra Light 1.5 carbon fibre, HSC7 Aero forks, E-Post seatpost and ZED2 crankset for optimum transfer of power, the 695 Aerolight is the ideal bike for cyclists in search of excellence, aerodynamics, and light weight. Better, faster and stronger.



Scan to watch the new
LOOK 695 Aerolight video

Find all our videos on our
channel [lookcyclstv](#)



E-POST

Integrated carbon seat post with elastomer, improving comfort. Adjustable by + or - 30mm in relation to the seat tube. Compatible with Shimano D12 internal batteries thanks to a new mount for the battery under the seat post for perfect integration. Weight : 207gr.

695 AEROLIGHT

Lighter, 100% carbon monobloc frame using new 1.5K carbon fibre. Frame weight : 925gr.

AEROSTEM

The new carbon AEROSTEM stem is light (160g, / intermediate size) and aerodynamic. The screws are hidden, the traditional cover is replaced with a sleeve clamp. Adjustable from -13° to +17°. Weight : 149gr.

INTERNAL ROUTING

The 695 AEROLIGHT is compatible with mechanical and electric assembly groups Di2 and EPS.

FRONT AEROBRAKE

Integration of the front brake: the patented LOOK V-Brake front brake caliper is integrated in the fork, thus providing the fork with an aerodynamic profile through the absence of traditional brake calipers, and improving braking by 20% in relation to traditional brakes.

HSC7 AEROBRAKE FORK

100% carbon monobloc fork (fork + fork ends). 335g.

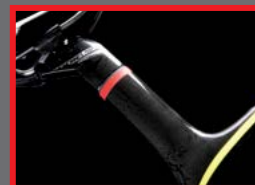
Bike weight : 6,485kg
(Shimano Di2 groupset-
Mavic Cosmic Carbone Ultimate Wheels)
Non-contractual picture

REAR AEROBRAKE

Integration of the rear brake: the rear brake caliper is situated under the chain stay. By eliminating the cable routing of classic brake calipers, the LOOK Aero Brake enables air to circulate freely, making it more aerodynamic and improving braking by over 20% in relation to traditional brakes.

ZED2 CRANKSET

100% carbon monobloc chainset with unrivalled weight/rigidity ratio. Variable crank arm length from 170 to 175mm thanks to a tri-lobe nut. Weight : 637gr.



695 AEROLIGHT // LIGHTER, FASTER, STRONGER*

NEW PRODUCT
LOOK IS 2014

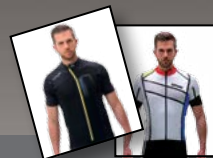


COFIDIS Team
Tour de France 2013

"Completely integrating the brakes in the fork to improve the aerodynamic flow, maintaining the ergonomics and maximum steering precision thanks to a swiveling stem, transmitting power by designing the first monobloc carbon chainset in the world, providing comfort by isolating the seat with elastomers..."

With the 695 Aerolight, we are integrating what everyone thinks of as obvious, but what no-one else is able to produce!"

Matthieu LANZ - Engineer and Head of the LOOK composite department



EXCELLENCE & HERITAGE outfits
2014 Collection :
www.lookcycle.com



ULTRA red outfit
2014 Collection :
www.lookcycle.com

The paint of the 695 Aerolight «Reflect» offers a very discreet bike during the day, but reflects the light brightly at night



Check out the video on how
the 695 AEROLIGHT
«Reflect» reflects the light



695 AEROLIGHT // Pro Team



695 AEROLIGHT // Heritage



695 AEROLIGHT // Reflect

*The
Premium
Collection*

Exclusively Handmade

A unique bike by LOOK: with the Premium range, LOOK offers enthusiasts exclusive and highly complex graphics which are impossible to produce on a large scale, and which can be personalised by adding your name or signature.

Build spec options vary depending on country : www.lookcycle.com

Build spec options vary depending on country : www.lookcycle.com

695 AEROLIGHT // LIGHTER, FASTER, STRONGER

NEW PRODUCT
LOOK 2014



"695 AEROLIGHT. Well balanced, very responsive, and rigid just like a bike for riders and pros should be. In terms of brakes, it is very, and we mean very, effective. The integration of the front brake provides a security detail as well."
Velo101.com - July 2013



695 AEROLIGHT // Flash Blue

Build spec options vary depending on country : www.lookcycle.com



REPLICA outfit
2014 Collection :
www.lookcycle.com



Frédéric BELAUBRE
3 times European Olympic
Distance Triathlon Champion



695 AEROLIGHT // White Acid

Build spec options vary depending on country : www.lookcycle.com



PRO TEAM white acid men's outfit
Elle EOS blue acid women's outfit
2014 Collection :
www.lookcycle.com



LARGE SPORTS BAG ON ROLLERS

The whole LOOK luggage range at: www.lookcycle.com

“AN ADDITIONAL STAGE”

The 695 Light overcomes an additional stage in the quest for high-performance. A 1.5K carbon weave of the finest finish enables the frame to be made 90g lighter, all while maintaining its rigidity and its comfort. The 695 Light, the ideal weapon combining power and steering precision.

Frame weight : 930gr.



ULTRA white men's outfit
RADIANCE women's outfit
2014 Collection :
www.lookcycle.com

Build spec options vary depending on country : www.lookcycle.com



695 LIGHT // Carbon Matte

New ultra-light 1.5K carbon fabric

New integrated Aerostem stem.
Weight : 149gr.

E-Post integrated seat post D12 compatible

HSC 7 carbon fork.
Weight : 310gr.

ZED 2 carbon monobloc crankset.
Weight : 637gr.



Team COFIDIS
Tour de France 2013



ULTRA grey outfit
2014 Collection :
www.lookcycle.com



695 LIGHT // White

Build spec options vary depending on country : www.lookcycle.com



695 LIGHT // Carbon Red Matte

"A FEATHERWEIGHT 675"

Thanks to the use of high module carbon and 1.5K fibre as a finishing layer, the 675 Light is 250 grams lighter and weighs under 990 grams! The steering set, the fork and the bottom bracket, now 100% carbon, have also been modified. Lighter, the 675 Light however maintains its rigidity, its output and the absorption of vibrations which makes the 675 a high-performance yet extremely comfortable frame.

"We have developed the 675 Light with three objectives in mind: performance, lightness and comfort. By making it lighter, it can now measure up to more stereotypically competition bikes. Still just as comfortable and equipped with its extremely precise steering post, its lightness will be a sizeable asset on long climbs."

Frédéric CARON - LOOK frames and bikes Product Manager

27.2 SEAT POST

Flexible carbon seat post. Diameter: 27.2 mm

INTEGRATED SEAT CLAMP

Integrated seat clamp, its design blends into that of the frame for fluid lines.

DCSC 2

Dual Comfort and Stiffness Concept 2: the ideal compromise between rigidity and comfort. Sports geometry which also provides a high degree of comfort.

675 LIGHT FRAME

Monobloc frame in HM carbon. Carbon reinforcements from the head tube, the bottom bracket and the seat post for more rigidity and resistance in the most demanding areas. Weight: 990g in S size.

A-STEM

An application of our Direct Drive concept: optimising the rider's posture thanks to the incorporation of the reversible stem.

HEADFIT 4

LOOK patented headset that dispenses with headset adjustment.

HSC 675 FORK

100% carbon monocoque fork specially designed for the 675, its design is consistent with the fluid lines of the frame.

STAYS

Optimised chainstay rigidity for effective power transfer.

BB PRESS FIT 86.5MM

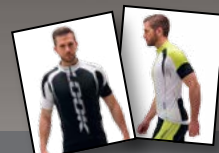
Bearings are integrated into the frame for longer life. More aesthetically refined, the bottom bracket shell is also wider and more rigid.

REMOVABLE CABLE STOPS

The 675 accommodates internal cable routing. It is mechanical, DI2 and EPS compatible.

675 LIGHT // PERFORMANCE, COMFORT AND LIGHTNESS

NEW PRODUCT
LOOK 2014



PRO TEAM black white
& PRO TEAM white acid outfits
2014 Collection :
www.lookcycle.com



675 LIGHT // Carbon White



675 LIGHT // Carbon Grey Matte



Sports bag on rollers
The whole LOOK luggage range at :
www.lookcycle.com

675 // COMFORT AND EFFICIENCY



“A COMFORTABLE AND RESPONSIVE BIKE WITH FLUID LINES”

The 675 is the bike of union, responding to the sportsmanship and the comfort sought by the greatest number of cyclists. Rigid and effective on the front triangle, it is particularly comfortable on the rear triangle. The integration of its stem, the routing of its cables and the bearings in the bottom bracket make the 675 a racy and compact bike with fluid lines.



675 // Black White Red

Frame weight : 1150gr.



675 // Black Matte

“IDEAL FOR ENDURANCE TESTS”

The 566 was specially designed for cyclists looking for a highly versatile bike, and it is ideal for endurance tests. Yet the comfort is not at the detriment of performance: LOOK has the know-how allowing it to propose ultra-lightweight weight carbon frames without compromising the bike's security and its performance. It is designed to be both rigid in strategic places (for example its crankset casing) while remaining comfortable.



566 // Carbon Acid Matte



BLACK LABEL
black outfit
2014 Collection :
www.lookcycling.com



566 // White

“OPTIMUM USE IN THE MOST EXTREME CONDITIONS”

Crowned with several world titles in cyclo-cross, LOOK is marking its return to the discipline with the X-85. Cutting edge, the X-85 equipped with disc brakes, guarantees optimum use in the most extreme conditions. The «Mud Evac» stays have been optimised to better evacuate mud. The flat top tube enables easy and comfortable carrying. The carbon frame provides the light weight and rigidity necessary for the greatest performances.



X85 // White Red



PRO TEAM
white red outfit
Collection 2014 :
www.lookcycling.com



“DEVELOPED WITH ONE SOLE OBJECTIVE: AERODYNAMICS”

100% carbon monocoque frame. Manufacturing technology derived from the aviation industry enabling strength and rigidity to be improved. 1350gr.

Indexed stem composed of 2 compressed carbon arms

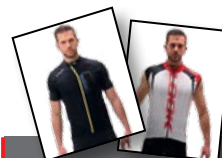
Offset aero carbon fork



ZED 2 one-piece carbon crankset. Crank arms adjustable from 170mm to 175mm

596 i-PACK // Black Matte

Digital wind-tunnel, full-size tests in the Nevers/Magny-Cours wind-tunnel to optimise geometry, sub-set monobloc construction, VHM carbon for lightness and rigidity, the 596 I-Pack has been developed with one sole objective: aerodynamics. This Formula 1 of the cycle is the first bike in the LOOK range to benefit from the integration of components with the ZED 2 chainset equipped with Keo Blade Cromo, indexed carbon stem and offset aero fork, integrated E-Post R32 seatpost, but also an internal compartment for the electric derailleur battery (DI2). The 596 I-Pack was designed entirely to approach perfection.



EXCELLENCE & PRO TEAM white red outfits
2014 Collection :
www.lookcycle.com



RUCKSACK

The whole LOOK luggage range at: www.lookcycle.com



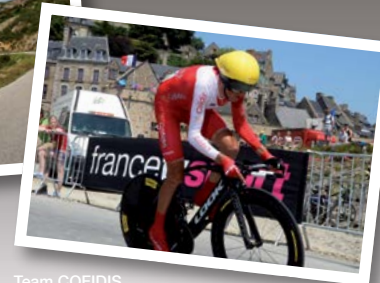
ULTRA
white red outfit
2014 Collection :
www.lookcycle.com



596 i-PACK // Carbon White



Sylvain SUDRIE
Triathlete, specialised in long distance
Champion of France 2011, 2012, 2013
2012 World Champion in team
2nd in Europe 2012



Team COFIDIS
Tour de France 2013 TT stage



PADDED BIKE TRANSPORT BAG

The whole LOOK luggage range at: www.lookcycle.com

L96 // THE CHAMPIONS' NEW WEAPON

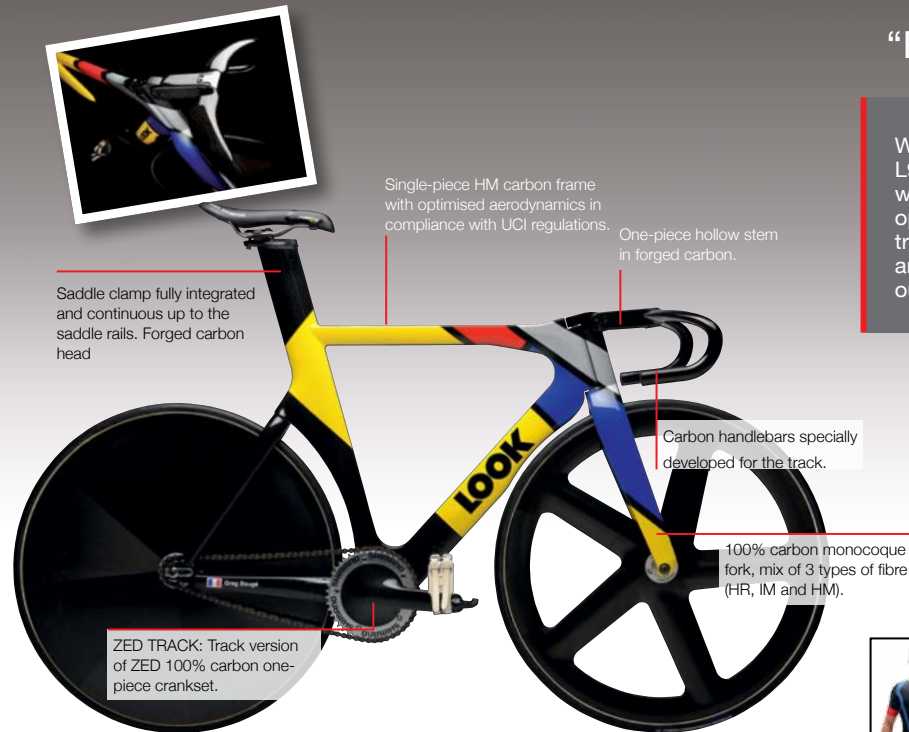
"PROPEL ATHLETES TO GLORY"

With six medals in the London Olympic Games, the L96 has had a sensational entry into the pantheon of world track cycling. Integration pushed to the extreme, optimisation of aerodynamics and improvement of the transfer of power, the L96 which is available in «Speed» and «Pursuit» version has great qualities of rigidity and output to propel athletes to glory.

Grégory BAUGE (French Team) - 2 medals in the 2012 Track World Championships (gold medal in Individual Sprint, silver medal in Team Sprint), 2 silver medals at the London 2012 Olympic Games (Individual Sprint and Team Sprint).

Guo SCHUANG (Chinese Team) - 3 Gold Medals in the 2012 Track World Championships (Keirin, Individual Sprint and Team Sprint), 3 medals at the London 2012 Olympic Games (silver medal in Team Sprint, silver medal in Keirin, bronze medal in Individual Sprint).

REPLICA outfit
2014 Collection :
www.lookcycle.com



L96 Available in SPEED version or PURSUIT version

AL 464 P // ANOTHER APPROACH TO TRACK RACING



"TO TRAIN LIKE CHAMPIONS"

The AL 464 P's geometry benefits from all our know-how on the track, and is inspired by frames which have made LOOK's reputation. The use of aluminium is adapted to those wishing to train in the best conditions on a lower budget.



BLACK LABEL
white outfit
2014 Collection :
www.lookcycle.com



AL 464 P



Messenger Bag

The whole LOOK luggage range at: www.lookcycle.com

“INNOVATING TO MOVE TOWARDS AN IDEAL”

The carbon and aluminium 927 were developed with the aim of offering an unrivalled level of performance and versatility in MTB. Combining suspension kinematics and proven steering precision, perfect geometry, the «new» standard 27.5 inch wheels and impressive lightness for a bike with 120mm of clearance, you will take the 927 to the summit of any difficulties with an ease that will not stop surprising you. When the slope is reversed, you will fully benefit from the 120mm of clearance and the 27.5 inch wheels, which provide the perfect compromise between clearing capacity and manoeuvrability.

“The 927 is the bike that can do everything: comfortable going on a cross country or marathon ride, ideal on week-long trials like Cape Epic, where its reliability and the safety that it provides will allow you to worry about you, rather than your bike, it will become essential on all the rides you go on, wherever they are!”

Pierre-Yves FACOMPRESZ - LOOK MTB Product Manager

FULL SUSPENSION CARBON

927 FRAME 120mm / 27”
VHM 3K carbon frame. 120 mm of clearance. Monobloc carbon front triangle, asymmetrical carbon rear triangle.

A-STEM

(927 CARBON)

The application of our Direct Drive concept: the optimisation of the steering position through integration of a reversible stem.

ROCKER

With a specially optimised treatment to be as light as a carbon rocker, the X-Light aluminium rocker is specific to the 927 and ensures an ideal shock absorption ratio and effective kinematics.



SHOCK ABSORBER
SRAM Monarch - ROCK SHOX

PROTECTIONS

Metallic protection moulded in the diagonal tube, which increases impact resistance by over 60% without added weight.

927 CARBON



MTB LINE Orange outfit
2014 Collection :
www.lookcycle.com



927 CARBON
Frame weight : 2450gr.

Build spec options vary depending on country : www.lookcycle.com



ALL MOUNTAIN
black gloves
2014 Collection :
www.lookcycle.com



927 ALU
Frame weight : 2750gr.

Build spec options vary depending on country : www.lookcycle.com



ALL MOUNTAIN
black gloves
2014 Collection :
www.lookcycle.com

“THE FINISHING TOUCH FOR YOUR BIKE”

LOOK has developed a full range of accessories to constantly improve your performance. Whether it be for road use, taking part in a triathlon, mountain biking or on the track, they have been designed for perfect compatibility with your LOOK frame and will be matched to your activity, even at the highest level. Innovative and smart, LOOK accessories will put the finishing touch on your bike.



AERO TRACK HANDLEBAR

Structure: carbon
Sizes: 350mm / 370 mm / 400mm (centre to centre)
reach 83 mm - drop 117 mm
Starter diameter: 27 mm - Stem diameter: 31,8mm
Weight: 350mm= 325g, 370mm= 355g, 400mm= 375g

A-STEM

Structure: aluminium
Lengths available:
80 - 90 - 100 - 110 - 120 - 130 mm
Possible angles: + or - 5 mm / + or - 15 mm
(equivalent of 35mm spacers)
Color: black
Weight: 180 gr.



AEROSTEM

Structure: hollowed hm carbon and hidden stainless steel clamp screws
Lengths available: 80 - 90 - 100 - 110 - 120 - 130 mm
Possible angles: from -13° to +17°
(equivalent to 75 mm of spacers)
Colors : black / silver gloss varnish - black / silver mat varnish - Weight : 149gr.
Compatible with all 695 models.

RSP Road

Adjustment: from -15 to -45 mm
Structure: single-piece HM carbon
Saddle clamps: forged carbon
Diameter: specific non circular
Colours: gloss varnished carbon finish 3k / mat varnished carbon finish 3k
Accessories: comes with a specific collar adaptable on the frame



RSP R5

Adjustment: + or - 5 mm
Structure: single-piece hm carbon
Saddle clamps: forged carbon
Diameter: specific non circular
Colours: black / red gloss varnish black/white mat varnish
Accessories: comes with a specific collar adaptable on the frame



LOOK GRIP

Structure: eva deformable material
Colours: white or black



LOOK CARBON SEAT POST

Structure: one piece HM carbon
Length: 350mm (useable length: 270 mm)
Diameter: 27.2 Mm
Saddle offset: 20 mm
Colour: gloss varnish carbon
Weight: 178 gm

BOTTLE CAGE

Structure: HR carbon
Colours: gloss or matt carbon / white
Weight: 24 gr
Supplied with 2 bottle cage mount bolts

CHAINRINGS

Cold forged chainrings for high precision gear changes
52x39 - 52x36 - 50x36 - 50x34
Weight: 92 g in 52 tooth / 46 g in 42 teeth



COMFORT & EXPERTISE

Two key words in the design of LOOK cycling wear. Cut, materials, design, etc., everything has been developed for your well-being and performance.

YOU WILL FIND ALL THE LOOK FABRIC COLLECTIONS, ACCESSORIES AND LUGGAGE AT www.lookcycle.com



MTB LINE
Orange

PRO TEAM
White / Red

HERITAGE

ELLE EOS
White / Black

ULTRA
Black / Grey

BLACK LABEL
White

ELLE RADIANCE
White / Red

ULTRA
White / Red

BLACK LABEL
Black

PRO TEAM
White / Acid

ELLE EOS
Blue / White / Acid

EXCELLENCE

PRO TEAM
Black / White

TEAM REPLICA

ULTRA
Red / Grey

RIDE WITH STYLE

Asphalt or dust, summer or winter... whatever your practice, whatever the weather conditions that you encounter during your rides, you will find all the products you need in the LOOK range.

Designed and developed by us, validated by our athletes, LOOK products implement the unique technological advances to push innovation and performance increasingly further... and always in style.

EXCELLENCE

NEW PRODUCT
LOOK S 2014

Intended for experienced cyclists who seek highly technical products, the Excellence range has been developed in Resistex Carbon, a fabric based on carbon fibers, which has properties to enhance physical performance.

Its technical features and clean design make this the premiere option.



ULTRA

Intended for enthusiast riders, the Ultra range offers a multitude of technical advantages for demanding cyclists. Material comfort and performance are the keywords for this range, whose simple yet efficient design makes it a safe choice.



REPLICA

NEW PRODUCT
LOOK S 2014

The Replica line showcases the original colours of the LOOK brand - yellow, red, white and blue - through the top-of-the-range, light materials that encourage the evacuation of perspiration. This line has been developed in close collaboration with our athletes to meet the demands of the hard-working riders.



BLACK LABEL

Monochrome signature, cleverly designed technical details and stylish appearance: the Black Label collection is indisputably top of the range and yet still affordable. This simple and effective collection will delight purists in search of a clean and elegant look.



PROTEAM

NEW PRODUCT
LOOK S 2014

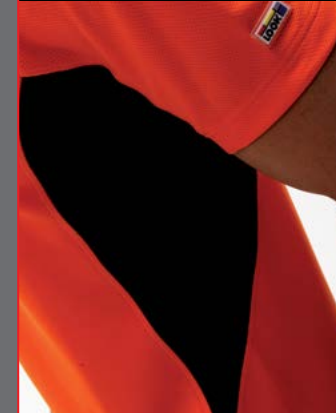
Intended for riders seeking the best value for money, the Pro Team range emphasizes the LOOK bicycle colours of the year so that you can purchase clothing that will perfectly match your frame. Its Easy Fit cut and the stretch of the materials will give you great freedom of movement and comfort.



MTB LINE

NEW PRODUCT
LOOK S 2014

Clothing designed for All Mountain enthusiasts seeking technical, simple products with a casual cut.



ELLE EOS & RADIANCE

NEW PRODUCT
LOOK S 2014

Specially designed for and suited to women, the ELLE range from now on can be split into two levels: EOS is composed of comfortable, colourful and affordable products and RADIANCE is composed of technical products, characterised with a more adjusted fit.



“OPENING UP TO NEW HORIZONS”

From the first ski bindings to the first automatic pedal and the 695 AEROLIGHT, LOOK has never stopped innovating, and it is for this reason that the INPI awarded us the prize of «Most Innovative Business in France» of the last 20 years in the «Sport» category.

With FREE JUMP, LOOK has reinvented the principle of fastening with automatic trigger, by applying its major invention to the world of horse-riding. FREE JUMP is now a benchmark in terms of innovations of highly-technical products used by amateur and professional horse-riders.

With the LOOK CARBON SPORT collection, we offer, with the same passion, a series of sports items in carbon, the material that we have mastered for nearly 30 years. Tennis racquets, bows, walking sticks, badminton racquets and golf clubs, so many excellent products that LOOK has chosen to dress in its legendary colours.

LOOK COLLECTION is developing an exceptional world at the crossroads between urban styles and winter sports. This range of technical clothing in high-quality materials, created with increasingly innovative fabrication procedures, provides great care in the design and comfort.

fræjump **LOOK**
CARBON SPORT**LOOK**
COLLECTION



www.lookcycle.com

Visit our website for full details of our products.
Receive all of our news by subscribing to the
monthly newsletter **LOOK Inside** on our website.



Concept LOOK | Photo: JP Ehrmann, T. Sourbier, JP Ehrmann, G. Descantes, L. Rosa, PresseSports