



2014

Campagnolo

PURE PERFORMANCE



Index



80 th ANNIVERSARY		4
2013 TEAMS		6
GROUPSETS		10
	COMPONENT TECHNOLOGIES	12
	ELECTRONIC DRIVETRAINS	28
	SUPER RECORD™ EPS™	30
	RECORD™ EPS™	34
	ATHENA™ EPS™	38
	MECHANICAL DRIVETRAINS	42
	SUPER RECORD™	44
	RECORD™	46
	CHORUS™	48
	ATHENA™	50
	CENTAUR™	54
	VELOCE™	58
WHEELS		62
	WHEEL TECHNOLOGIES	64
	CARBON WHEELS	72
	BORA™ ULTRA™ TT	73
	BORA™ ULTRA™ 80	74
	BORA™ ULTRA™ TWO	75
	BORA™ ULTRA™ 35	76
	BORA™ ONE™	77
	BORA™ ONE™ 35	78
	HYPERON™ ULTRA™ TWO	79
	ALU/CARBON WHEELS	80
	BULLET™ ULTRA™	81
	BULLET™ ULTRA™ 80mm	82
	BULLET™ ULTRA™ 105mm	83
	BULLET™	84
	BULLET™ 80mm	85
	ALUMINIUM WHEELS	86
	SHAMAL™ ULTRA™	87
	EURUS™	88
	ZONDA™	89
	SCIROCCO™ 35mm	90
	VENTO™ ASYMMETRIC™	91
	KHAMSIN™ ASYMMETRIC™	92
	NEUTRON™ ULTRA™	93
TRIATHLON / TIME TRIAL		94
	COMPONENTS	96
	WHEELS	100
	BORA™ ULTRA™ TT	100
	SUGGESTED WHEELS	101
CYCLOCROSS		102
	COMPONENTS	104
	WHEELS	106
	BORA™ ONE™ CX	106
	BORA™ ONE™ 35 CX	107
	SCIROCCO™ 35mm CX	108
	KHAMSIN™ ASYMMETRIC™ CX	109
PISTA		110
	COMPONENTS	111
	WHEELS	111
	RECORD™ PISTA™	110
	GHIBLI™	111
	PISTA™	111
TECH DATA		114
SERVICE CENTER		142
SALES NETWORK		144

The images on pages 11, 28 and 29 of the Campagnolo 2014 catalog contain handlebars produced by FSA Srl



2013: CAMPAGNOLO 80th ANNIVERSARY

2013 is the year of Campagnolo 80th Anniversary and Vincenzo Nibali wins the Giro d'Italia riding with the 80 Anniversary groupset. 80 years of cycling innovation and passion for the most beautiful sport in the world have been crowned by the legendary victory of Vincenzo Nibali, rider and leader of the Team Astana. A success built stage after stage and signed with an epic undertaking that reproduce the most beautiful moments of the past.

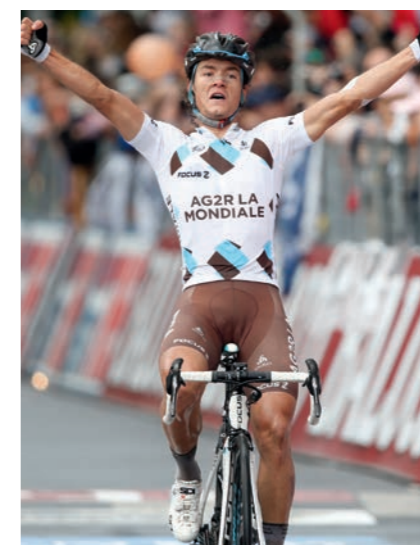
It has been a victory signed by Campagnolo. Vincenzo Nibali rode with the 80 Anniversary Groupset, a special and limited collection, made to celebrate 80 years of Campagnolo History. A unique carbon finishing, cutting-edge surface treatments and an exclusive logo are just some of the distinctive elements of this unique and winning product.

80
ANNIVERSARY
Campagnolo

2013 TEAMS



Since its inception 80 years ago Campagnolo® has always been the component of choice of the greatest icons cycling has produced. Throughout history champions such as Coppi, Gimondi and Merckx have counted on the quality and precision of Campagnolo to accompany them to their unforgettable victories. This trend has continued through to the present day and 2013 is to be no different as several of the best teams and athletes in the professional peloton will count on that very same Campagnolo® quality and performance that the greatest champions of cycling before them have trusted year in and year out. This year will see several teams continue on with Campagnolo but also witness several new teams join the Campagnolo family in their quest for victory.



MOVISTAR

with a roster that includes such talent as Alejandro Valverde, Rui Costa, Nairo Quintana, Fran Ventoso and new addition Alex Dowsett all riding atop both Campagnolo® EPS™ and the full range of Campagnolo® high performance wheels

ASTANA

New additions to the Campagnolo® professional team line-up include the likes of Astana, one of the most powerful teams of the past year who have strengthened their roster for the 2013 season. Vincenzo Nibali, Jakob Fulsgang, Janez Brajkovic and the rest of the team will count on the precision and performance of Campagnolo® EPS™ to carry them to the most successful season yet.

LOTTO-BELISOL

with over 100 victories to his name André Greipel hopes to continue his efforts to make sprinting history with the help of a great lead-out train in addition to the precision of his Campagnolo® EPS™ group and reactivity of his Campagnolo® Bora™ wheels.

AG2R LA MONDIALE

AG2R La Mondiale celebrates its first year with Campagnolo® as well and the members of the French squad will also be pairing their Focus frames with the electronic EPS™ groupset in their quest for victory. Newcomers to the team such as Domenico Pozzovivo and Davide Appollonio are sure to bring experience from other top teams to help AG2R make an even bigger impact.

VACANSOLEIL

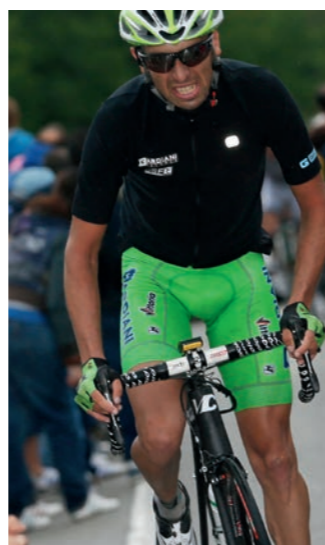
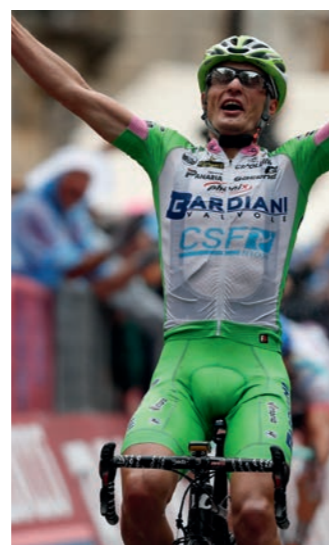
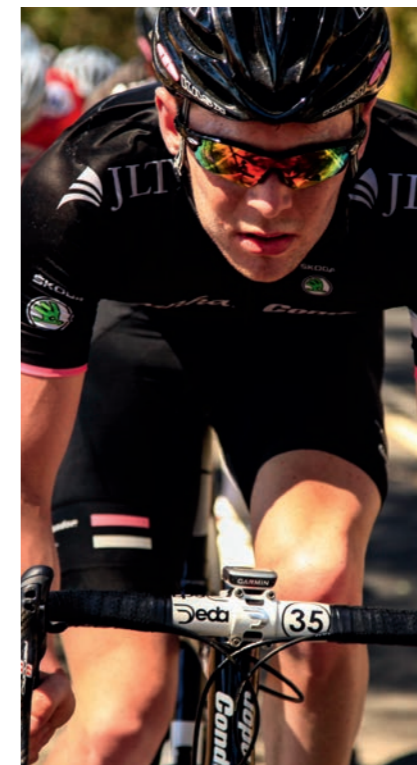
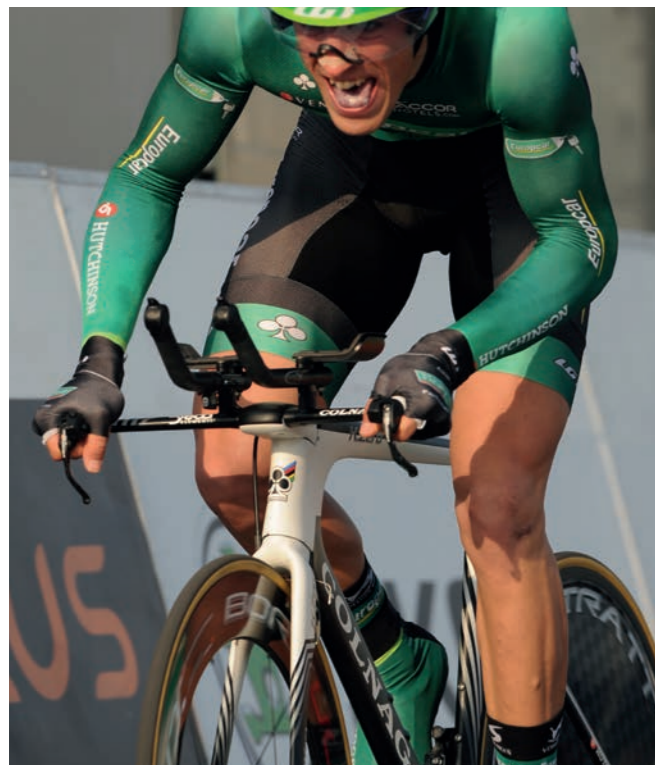
with several new names in addition to a list of powerful riders from last year, the team including the likes of Johnny Hoogerland, Jose Rujano, Juan Antonio Flecha, Lieuwe Westra and Thomas de Gendt is sure to impress this season.

2013 TEAMS



With 5 teams in the UCI Pro Tour, 19 Pro-Continental, 7 Continental, 29 U-23 squads and countless others it is abundantly clear that a great deal of the cycling world turns to Campagnolo® for the technical advantage, reliability and performance it takes to win at all levels.

With teams from every part of the map and athletes from every corner of the globe, the best men and women in both road and triathlon choosing its products, Campagnolo® is truly the reference point for cycling component excellence.



TEAM EUROPCAR

In France, Team Europcar has chosen to extend its long relationship with Campagnolo and will continue using Campagnolo® EPS™ in addition to Campagnolo® wheels. Thomas Voeckler will fight again to keep his polka-dot jersey and win even more stages in this year's Tour de France in addition to trying his hand at several other races atop his Bora™ and Hyperon™ wheels. Additional talent sure to leave their mark come in the form of Pierre Rolland, Yukiya Arashiro and Sébastien Chavanel.

BARDIANI CSF

the young, completely Italian team, from the riders and staff to the sponsors, will count on both Campagnolo® EPS™ technology for precise and speedy transmission in addition to Campagnolo® wheels to guide them in their quest for victory.

NIPPO-DE ROSA

Team Nippo-De Rosa will strive to improve upon the 28 international victories of the past season aboard their fully Campagnolo® equipped De Rosa Protos bikes this year. Italian components to carry the Italian-Japanese squad to the highest step of the podium all over Asia but also in Europe.

RAPHA CONDOR

Rapha Condor is also a new face within the Campagnolo family this year. The team is an incubator for the best in rising British talent and has recently revealed an even younger line-up for 2013.

BISSELL PRO CYCLING

Bissel Pro Cycling will ring in another year of success atop fully Campagnolo®-equipped bikes in North America. As the winningest team in the National Racing Calendar (NRC) in 2012, BISSELL will again look for invitations to the major UCI tours.



WHEELS

- WHEEL TECHNOLOGIES
- CARBON WHEELS
- ALU/CARBON WHEELS
- ALUMINIUM WHEELS

- 64
- 72
- 80
- 86

CAMPAGNOLO® WHEEL TECHNOLOGIES

Campagnolo® is dedicated to raising the standards of what a performance wheel should be and to do so, invests a great deal in research and development. The engineers of the Campy Tech Lab™ are not only tasked with producing wheels that meet or exceed our elevated performance standards, but also with producing a high quality product that is reliable and durable as well. From the entry level Khamsin™ to the professional level Bora™ both performance standards and reliability are guaranteed.

Each and every wheel that bears the Campagnolo® name is manually assembled and goes through several manual and digital inspection processes. Every spoke, nipple, rim and quick release are inspected at each step in the production process just as spoke tension and wheel alignment are verified before any wheel can leave the factory.

We are very proud of our wheels and the public has come to expect nothing less than the best from Campagnolo® which makes such a thorough inspection process absolutely necessary. A process that requires nearly 1 hour and 40 minutes but guarantees Campagnolo® quality and performance for the life of each and every wheel we produce.

S.H.A.R.C Index

Because finding the perfect wheel means having the correct information.

Campagnolo®, in collaboration with professional racers as well as amateur enthusiasts, has identified and developed the five most significant indicators that will allow you to choose the best wheel for your riding style and your needs.

What does S.H.A.R.C. stand for?

Smoothness:

This indicator helps you understand the degree of smoothness of one wheel with respect to another thanks, for example, to the use of high performance the CULT™ ceramic ball bearings, or the USB™ ceramic ball bearings, or thanks to other technologies applied to the wheel such as 2-Way Fit™.

Handling:

No race course in cycling is a straight line and dealing with curves or changing directions quickly can often times make a difference in race results. Many factors determine how well a wheel handles and to evaluate this indicator we take into consideration the geometry of the spokes, lacing patterns, hub design, cross section of the rim, materials employed and even the type of tire to be used.

Aerodynamics:

Indicates the performance features of the wheel in terms of its propensity to penetrate the air. This factor depends on the height and profile of the rim, the section and form of the spokes, and the degrees of camber of the wheel.

Reactivity:

How "ready" and quick is the wheel in response to your change of pace on the pedals? The reactivity index of the wheel refers precisely to this concept.

Reactivity depends on the weight of the rim and of the wheel in its entirety, on the torsional stiffness (i.e. how much the wheel deforms around the hub at the moment in which the cyclist pushes on the pedals), the flexional stiffness (i.e. the extent to which the wheel maintains its shape along its axis when it is shifted, due to the push on the pedal, from the vertical axis), and on inertia.

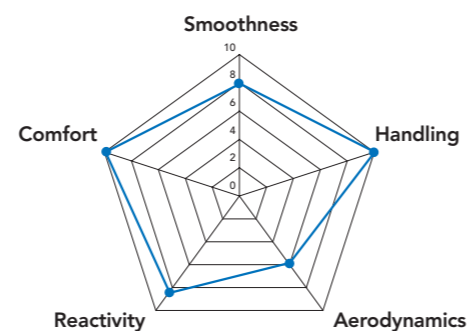
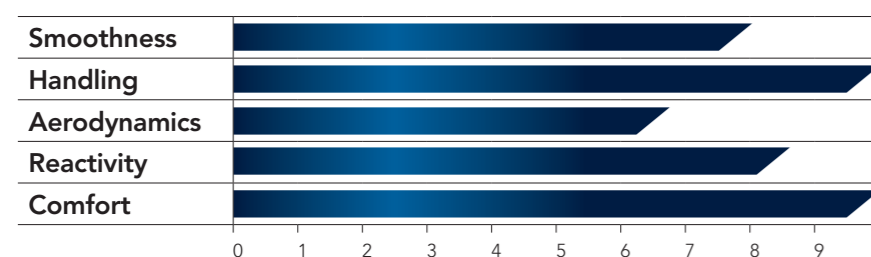
Comfort:

Do you prefer a wheel that can absorb the ruggedness of the terrain or an absolutely rigid wheel with no compromise? It depends on your driving style and your particular needs.

The comfort index aims to help you to understand the behaviour of the wheel in the case of roads that are not perfectly smooth, and in any case to help you understand the extent to which the wheel transmits the vibrations of your bike.

Campagnolo® provides you with all the technical information, but now it's up to you to decide which is the perfect wheel for your needs! Your passion, your riding style and your sensations will aid you in making your decision.

S.H.A.R.C



S.H.A.R.C

	Smoothness	Handling	Aerodynamics	Reactivity	Comfort
CARBON WHEELS					
BORA™ ULTRA™ TT	10	6	10	7,5	5
BORA™ ULTRA™ 80	10	7	10	9	8
BORA™ ULTRA™ TWO	10	9	9	10	9
BORA™ ULTRA™ 35	10	9	9	9	9
BORA™ ONE	8,5	9	9	9,5	9
BORA™ ONE 35	8,5	9	9	9	9
HYPERON™ ULTRA™ TWO	10	10	6	10	9
ALUMINIUM/CARBON WHEELS					
BULLET™ ULTRA™	10	8	9	7,5	8
BULLET™ ULTRA™ 80mm	10	7	9,5	6,5	8
BULLET™ ULTRA™ 105mm	10	6	10	6	7
BULLET™	8,5	8	9	7,5	8
BULLET™ 80mm	8,5	7	9,5	6,5	8
ALUMINIUM WHEELS					
SHAMAL™ ULTRA™	9	9	8,5	9	8
EURUS™	8	9	8,5	8,5	8
ZONDA™	8	9	8,5	8	8,5
SCIROCCO™ 35mm	7,5	9	8,5	8	8
VENTO™ ASYMMETRIC™	7,5	8	7,5	7	9
KHAMSIN™ ASYMMETRIC™	7,5	7,5	7,5	6,5	8,5
NEUTRON™ ULTRA™	8	10	6	8,5	10
CX WHEELS					
BORA™ ONE CX	8	9	9	9,5	9
BORA™ ONE 35 CX	8,5	9	9	9	9
SCIROCCO™ 35mm CX	7,5	9	8,5	8	8
KHAMSIN™ ASYMMETRIC™ CX	7,5	7,5	7,5	6,5	8,5

CAMPAGNOLO® WHEEL IDENTIFICATION CARD

Since its birth over 80 years ago Campagnolo® has been dedicated to continuous innovation in order to produce the best, most competitive and reliable products possible. To continually push the limits in this way is the work of the engineers of the Campy Tech Lab™.

Even the smallest details and material choices are painstakingly scrutinized in an effort to produce what is often to become the newest performance standard. As a result, our testing department is one of the most important areas of the entire operation and each and every product must go through strenuous and extreme testing before it earns the right to bear the Campagnolo® name. We test at levels above and beyond anything required and as a result produce products that are a step ahead.

- **Fatigue test:** before the manufacturing stage, each wheel and each of its components are subjected to long and very challenging tests that ensure the durability and performance over time.
- **Crash test:** simulates the impact of the wheel in differing situations. Campagnolo® crash tests have successfully passed all requirements stipulated by the UCI.
- **Tyre burst test:** all Campagnolo® wheels are tested at inflation pressures well above those indicated on the tyre.
- **Environment test:** exposure to UVA and UVB rays, salt attack and exposure to moisture: these are the tests that all Campagnolo® wheels must pass to ensure maximum performance and reliability over time.



100% Manually assembled and Electronically checked

The extensive attention to detail and testing mentioned above may be sufficient for some companies to ensure the quality of their product but not for Campagnolo®. To ensure the quality of each and every wheel the standards applied to the production process must be then verified on each and every final product at the end of fabrication. Campagnolo® made a clear and bold decision: to assemble each wheel manually and submit it to a series of final inspections that guarantee their quality.

Only through in-depth inspection, both manual and digital, of each and every piece of every final product that leaves the premises can we be 100% sure of the exact same quality for each and every wheel that bears the Campagnolo® name.

- **Balancing:** guarantees the absence of vibrations at fast speed.
- **Lateral and radial control:** guarantees the perfect alignment of the wheel to ensure precise rolling of the wheel.
- **Camber:** ensures the perfect symmetry of the wheels with the bicycle.
- **Spokes tension:** ensures optimal balance at every point of the wheel.
- **Rolling torque of the hub:** ensures a perfect adjustment of the hubs.

In order to leave you with absolutely no doubt as to the quality of the wheel purchased, Campagnolo® has implemented the Campagnolo® Wheel Identity Card (ID) program. The Campagnolo® Wheel ID program sees an ID card that uniquely identifies each individual wheel and is manually compiled and signed to guarantee that all tests have been done and that quality is guaranteed.

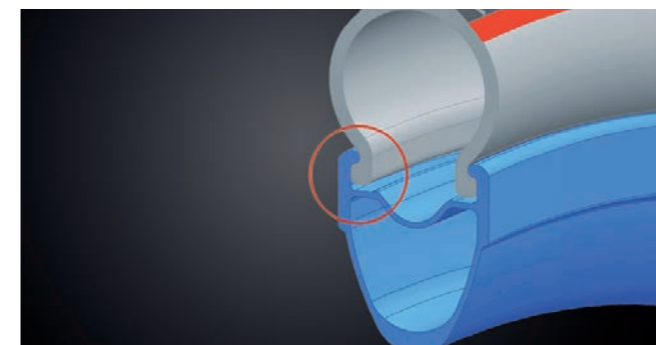


ULTRA-FIT™



The design we have employed for our rims using Ultra-Fit™ Tubeless technology allows the sidewalls of the tire to mate perfectly with the shoulders of the rim.

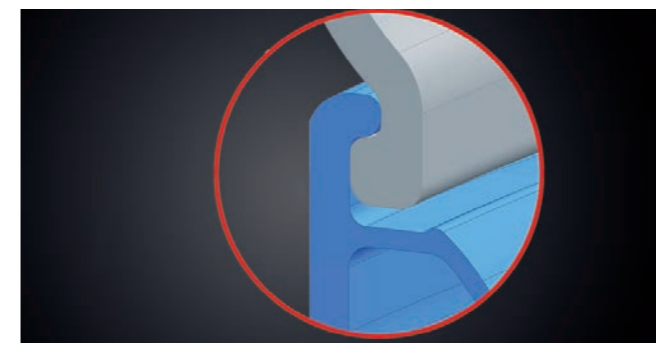
In our tests Ultra-Fit™ Tubeless wheels far surpassed any other wheel fitted with a traditional tire. All energy loss is eliminated by excluding all possible movement between the rim and the tubeless tire. Tubeless tires are exceptionally smooth and have less rolling resistance than traditional clinchers.



Thanks to the rim profile design, ULTRA-FIT™ allows for perfect adherence between the tubeless tire and the rim.

The advantages of ULTRA-FIT™ technologies are:

- easy tire mounting
- maximum safety
- less friction
- less energy dispersion
- improved performance



2-WAY FIT™



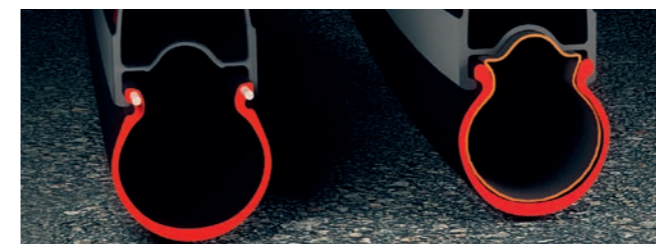
2-Way Fit™ technology makes it possible to mount either tubless or clincher tires on the same rim.

With 2-Way Fit™ Campagnolo® customers can decide on any given day to use either clincher or tubeless tires as the wheel is perfectly compatible with both systems.

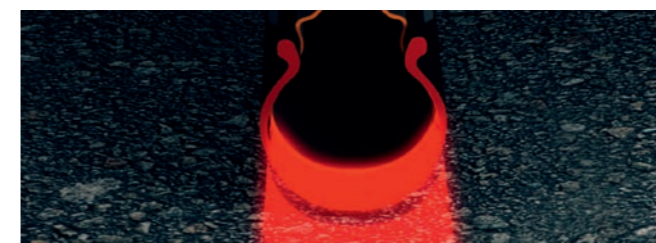
With no doubt tubeless tires are the future of road cycling. Apart from greater comfort, the advantages are many: using a tubeless tire you can exploit the greater smoothness due to the absence of friction between the tire and the tube. There are no risks of sudden deflation when a tubeless tire is punctured, a great advantage in terms of safety.

The lack of tubes eliminates puncture risks.

And what if the tubeless tire has a puncture? The Campagnolo® 2-Way Fit™ system allows you to use a traditional inner tube by simply removing the hermetic closure valve to ride home with no problem.



The tubeless tire does not have an inner tube and consequently there is no risk of sudden deflation due to punctures.



The tubeless tire rolls more smoothly thanks to the absence of friction between tire and inner tube.

CULT™

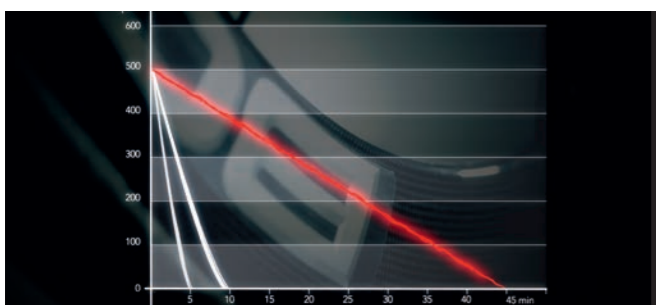
**CULT™: Ceramic Ultimate Level Technology**

A truly efficient wheel is not only aerodynamically efficient but also must roll as smoothly as possible. CULT™ technology employs ceramic bearings that are technologically superior to any competitors as well as Cronitect® steel, guarantees that your Campagnolo® are the highest performance solution you can find. Cronitect® steel is highly resistant to corrosion to the point that grease is unnecessary and only a small amount of oil is used.

Technologically advanced superior quality ceramic bearings in addition to the precision machining of the cup/cone structure and absence of grease drastically reduce friction and increase the smoothness of the wheel by as much as 9 times when compared to standard bearings.

An outstanding result achieved by using cutting-edge technologies in the field of materials processing.

Laboratory tests prove the efficiency of CULT™ technology. Spinning a wheel with CULT™ technology at 500 RPM and allowing it to decelerate show the Campagnolo® wheel to continue its motion for a full 45 minutes. In other words, CULT™ ceramic bearings are 9 times more efficient than standard bearings, allowing you to waste less energy, increase your speed and push your limits even farther.



USB™



Campagnolo® has a long-standing reputation for the extremely high performance of its hubs in terms of smoothness and reliability.

In fact, all the projects are entirely developed in our R&D department and we have put obsessive care into taking care of every detail.

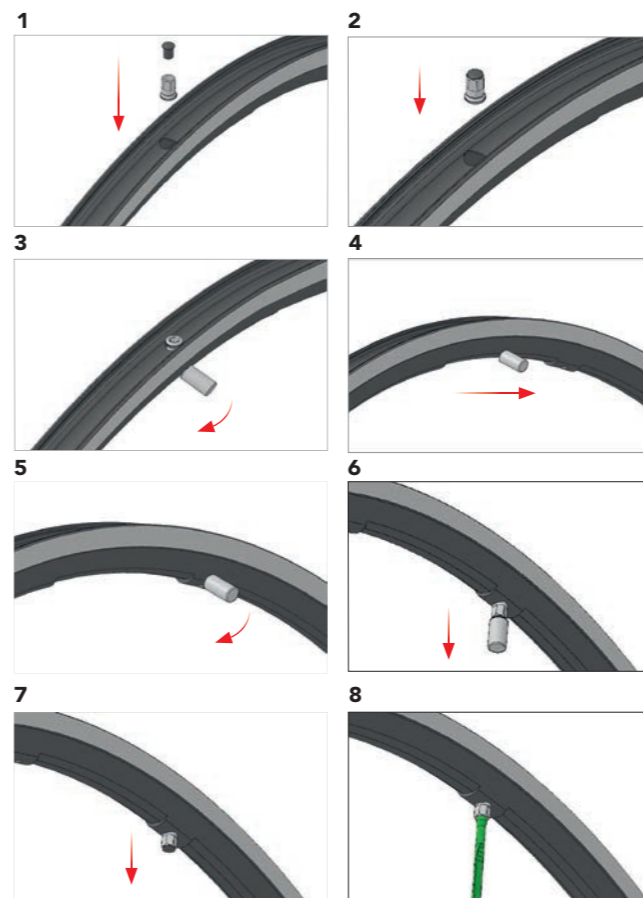
The hubs with USB™ ceramic bearings (ULTRA SMOOTH BEARINGS) increase smoothness, decrease rolling resistance, reduce weight and reduce the need for maintenance.

Comparative tests have shown that USB™ bearings are 50% smoother than standard bearings.

Now improving your performance during the race or simply going for a ride with your friends will be easier.



MoMag™

**What is MoMag?**

A technology that offers several advantages to the structural integrity of the wheel as well as eliminating the need for rim tape. The name derives from "Mounting Magnet" system, shortened to MoMag™.

How does it work?

The nipples, once inserted inside the rim via the valve hole, are "guided" to the point of connection with the spoke by means of the magnet.

This simple but ingenious system makes it possible to have a wheel without holes on the upper bridge, but with spokes tensioned by traditional nipples!

Advantages

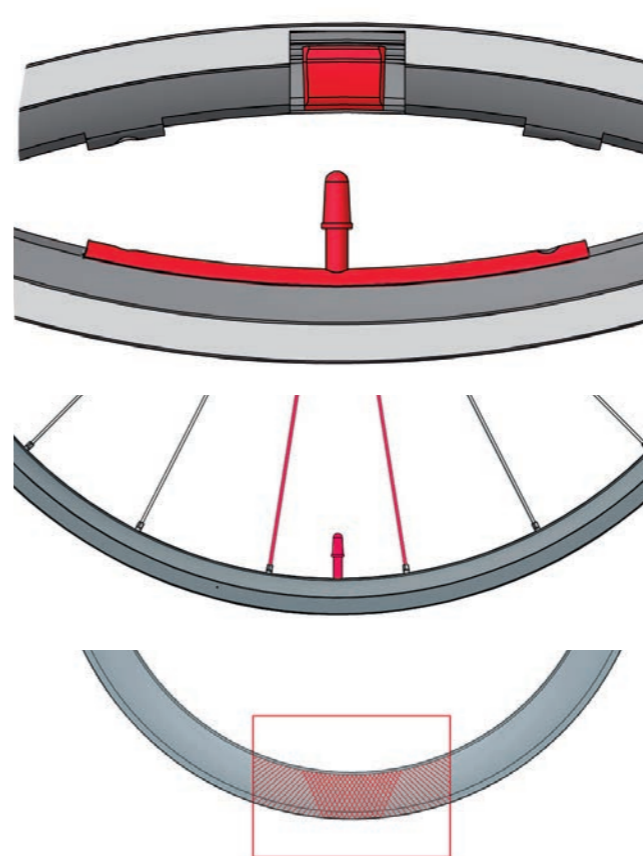
No holes on the rim means that the rim is uniform at every point, free from stress points or zones of weakness and, for the clincher profiles no rim tape is required, to the benefit of weight reduction.

The advantages are immediately clear: greater rim lifetime, greater resistance to fatigue, the possibility to give the spokes greater tension, and greater stiffness which, in terms of performance, mean greater reactivity and acceleration.

But that's not all. The advantages also include extremely quick and simple maintenance and spoke replacement.

All to the benefit of cyclists who choose Campagnolo®.

DYNAMIC BALANCE™

**RIM Dynamic Balance™ – Aluminium wheels.**

The concept is simple and elegant: balance the weight of the gasket, with an item of similar weight placed on the exact opposite side. For top models, this is obtained by a special operation on the section of the rim opposite the rim joint.

SPOKES Dynamic Balance™

For entry-level models, Dynamic Balance™ is obtained by using two oversized spokes in the section opposite the joint. The result is a wheel with perfectly balanced rotational dynamics.

RIM Dynamic Balance™ – Carbon wheels.

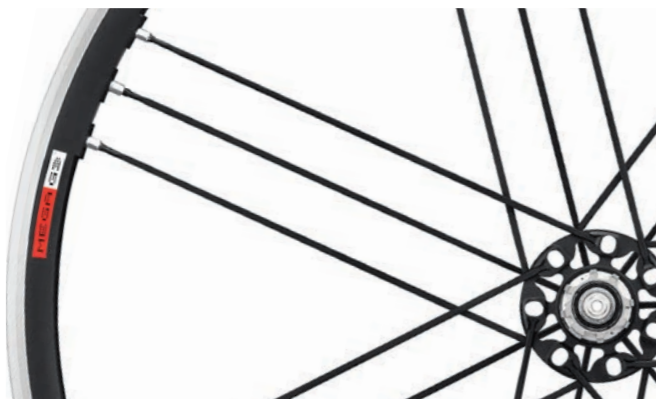
For carbon wheels the principle is the same, but applied using a different technology. When making carbon rims, the pieces of carbon fabric are aligned in such a manner that the resulting rim is always balanced.

G3 SPOKING™

MEGA G3™

G3™ geometry: we have reinvented the wheel ... not just its look.

Campagnolo® has developed an assembly architecture which, compared with a traditional wheel, makes it possible to improve energy transfer, reduce the stress on the spokes on the right and increase transverse rigidity. This is achieved because in G3™ geometry the right-hand side of the rear wheel is fitted with twice as many spokes as the left.



The results of G3™ system are truly extraordinary: better transfer of the driving torque, better lateral rigidity, reduction of the stress in the rear wheel spokes. And thanks to the G3™ system that compensates for the forces acting on the 2 sides of the wheel, there are no more wheel vibrations, even for heavier people.

The 2014 range sees the G3™ technology trickle down even further thus bringing higher performance within the reach of all. G3™ becomes Mega-G3™ thanks to the oversize flange and an increase in lateral and torsional stiffness results.

SPOKE ANTI-ROTATION SYSTEM™

The Campagnolo® Hyperon™ One, Zonda™ and Bora™ One wheels feature a spoke antirotation system patented by Campagnolo® that raises spoke performance to an unprecedented level. Campagnolo® designers studied the spoke-hub interface from the ground up to create a coupling system that would keep the spokes always in the exact identical position. This means that the spokes of Campagnolo® wheels do not rotate, so there is no loss of tension during use and the aerodynamic penetration is not compromised.



3DIAMANT™ - BRAKE SURFACE TREATMENT

NEW

Campagnolo® has employed its engineering resources to further improve the already impressive braking performance of its full carbon wheel systems. Having already researched, designed and produced internally high-performance brake pads specifically made for Campagnolo® carbon wheels, the Campy Tech Lab™ set its sights on perfecting the braking surface. To ensure optimum performance in all conditions as a complete braking system, the brake pads would function even better with an improved braking surface. The outcome of this research produced the new 3Diamant™ surface treatment which, using advanced machinery and state of the art diamond tipped precision tools, eliminates imperfections caused by non-homogenous resin deposits and allows the brake pad to work directly atop specially woven carbon fibers. This new process eliminates the "breaking-in" period, improves braking performance under both wet and dry conditions and creates a more linear and smooth overall braking performance.



QUICK RELEASE CAMPAGNOLO®

What is the Campagnolo® Quick Release?

The Campagnolo® Quick Release is more than just a wheel retention system that acts as an axle. It is highly symbolic as it is the single piece from which the long and glorious history of Campagnolo® was born. The company's objective of continuously innovating to improve the cycling experience started with the quick release and it remains a functional and necessary symbol to this creed even now. Maximum performance in terms of assembly/disassembly ease, weight and smoothness of the wheel without compromising safety in any way.

The patented Campagnolo® mechanism is the one that best meets the rider's needs. The lever is positioned centrally with respect to the axis of the hub axle, i.e. in the best position to put both ends of the axle in traction without differences in load between the sides. The axle is in the form of a cam and applies the closure traction on the axis of the quick release.

Starting a few years ago, for the Bullet™ Ultra™ family and full-carbon wheels Campagnolo® incorporates a more aerodynamic version of the quick release. The mechanics and the design are those of the well-tested Campagnolo® patent, and the lever has been designed for the maximum aerodynamic penetration.

Advantages

Thanks to the cam axle closure, it is simple and intuitive to understand the force to be applied for correctly closing the quick release and, even more importantly, the cam creates a mechanical impediment to the opening of the release, making it extremely safe during road use. The fork positioned symmetrically with respect to the sides of the lever and centrally with respect to the axis of the skewer, enables an even distribution of the loads and forces at each point of the skewer, thus avoiding critical breakage points and at the same perfect closure the fork of the frame and the wheel. The symmetry of the lever and the special shape of the cam make locking and releasing the wheel extremely easy, fluid, and safe. The new aerodynamic form, moreover, considerably improves the aerodynamic coefficient of the range of wheels dedicated to time trial disciplines.

CARBON WHEELS				
BORA™ ULTRA™ TT				•
BORA™ ULTRA™ 80				•
BORA™ ULTRA™ TWO				•
BORA™ ULTRA™ 35				•
BORA™ ONE™				•
BORA™ ONE™ 35				•
HYPERON™ ULTRA™ TWO				•
ALUMINIUM/CARBON WHEELS				
BULLET™ ULTRA™				•
BULLET™ ULTRA™ 80mm				•
BULLET™ ULTRA™ 105mm				•
BULLET™		•		
BULLET™ 80mm		•		
ALUMINIUM WHEELS				
SHAMAL™ ULTRA™			•	
EURUS™			•	
ZONDA™		•		
SCIROCCO™ 35mm		•		
VENTO™ ASYMMETRIC™			•	
KHAMSIN™ ASYMMETRIC™	•			
NEUTRON™ ULTRA™			•	
CX WHEELS				
BORA™ ONE CX				•
BORA™ ONE 35 CX				•
SCIROCCO™ 35mm CX		•		
KHAMSIN™ ASYMMETRIC™ CX	•			
PISTA WHEELS				
GIBLI™				•



BORA™ ULTRA™ TT

Tubular: 975 g

NEW



In the race against time the stopwatch is your most feared adversary. To have an advantage over him you need not only great physical condition but also a technological advantage in the form of the best equipment. Campagnolo® engineers have worked painstakingly to produce the newest evolution of the disk wheel, the BORA™ ULTRA™ TT. Campagnolo continues a long history of TT victories with the Bora™ Ultra™ TT and with its extreme lightweight, efficient aerodynamics, low rolling resistance and highly reactive performance this wheel is sure to bring along an even longer list of victories.

Right side



Left side



QUICK RELEASE



Completely redesigned and lighter aerodynamic profile wheel block.

RIM

DISC

HUB

CARBON WHEELS

Inherently lightweight while being naturally stiff and reactive it is quite simple to understand just why the highest performance wheels are made from carbon fiber.

The material's light weight reduces rotational mass and lowers the overall wheel weight. Its stiffness and the ability to orient each individual fiber to increase that stiffness according to engineers wishes make it great for improving reactivity, durability and comfort. The ability to mold carbon in any shape gives engineers the possibility to develop profiles that cheat the wind like never before.

With more variables to work with the possibilities for the engineers of the Campy Tech Lab™ are endless and there is little doubt as to why they choose carbon while developing ultra-high-performance wheels.

Performance wheels are made from carbon. Winning wheels are made from carbon by Campagnolo®.

BORA™ ULTRA™ TT	73
BORA™ ULTRA™ 80	74
BORA™ ULTRA™ TWO	75
BORA™ ULTRA™ 35	76
BORA™ ONE™	77
BORA™ ONE™ 35	78
HYPERON™ ULTRA™ TWO	79



Full High Modulus Carbon rim for tubular



Brake pads made especially for carbon wheels:

the new blend increases the brake performance on both dry and wet surfaces without increasing the wear and tear on the pad or wheel.

Braking surface:

newly developed full carbon rim uses carbon braking surface in an effort to add uniform braking performance in addition to saving weight.



Full carbon disc in a specially developed weave

Profile:

extreme new design reduces profile on both drive and non-drive sides for an even slimmer and more aerodynamic design.



Bearings with CULT™ technology:
the combination between the highest quality ceramic bearings and housing in special Cronitect® steel. CULT™ makes the wheel nine times smoother than the standard system of steel bearings.

Cup and cone bearings:

easy bearing adjustment – reduces possible bearing play – precision operation – maintains performance over time.

Lightweight and extremely rigid aluminum hub construction

Cassette:

compatible with Campagnolo® 10 and 11 speed cassettes as well as Shimano Inc. 9, 10, and 11 speed cassettes.

BORA™ ULTRA™ 80

Tubular: 1540 g

The Bora name is synonymous not only with a famous wind but also with the highest performing wheels in the professional peloton. The relatively new 80mm rim profile is yet another high performance option from the Bora™. Extremely light, lightning quick reactivity and highly aerodynamic the Bora™ Ultra™ 80 is a wheel that commands respect. Add CULT™ bearings that make it 9 times smoother than a traditional system and this wheel strikes fear into its adversaries. Designed for professionals, available to everyone.



Rear wheel
Bright label



Front wheel
Dark label



QUICK RELEASE



Completely redesigned and lighter aerodynamic profile wheel block.

RIM



Full carbon high profile for 80mm tubular

SPOKES



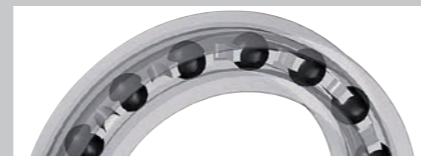
Aerodynamic profile in steel: ensuring the maximum aerodynamic penetration and, thanks to the material employed, lower weight and greater reactivity.

HUB



Carbon fibre hub: provides a high degree of lateral stiffness and reduces weight to the minimum.

Aluminium axle



Ball bearings with CULT™ technology: the combination between the highest quality ceramic bearings and housing in special Cronitect® steel. CULT™ makes the wheel nine times smoother than the standard system of steel ball bearings.

Oversized flange: greater torsional stiffness and greater reactivity.

Cup and cone bearings

Exclusive pressing system for the rim in unpainted carbon:

enables an extremely limited weight.

Brake pads made especially for carbon wheels:

the special blend increases the brake performance on both dry and wet surfaces without increasing the wear and tear on the pad.

Dynamic balancing on the rim

Exclusive G3™ spoke pattern:

perfect balance of the spoke tensions on both sides of the wheel. Reduces stress, increases transversal rigidity and the transmission of power to the wheel. G3™ eliminates vibrations even with "heavy" cyclists.

Self-locking aluminium nipples

BORA™ ULTRA™ TWO

Tubular: 1310 g

There is a reason professional riders have trusted the Bora™ Ultra™ Two to accompany them to the podium for years. The continually evolving, continually improving ideal competition wheel. Maximum aerodynamic performance, extremely lightweight, incredible smoothness and reactivity that knows no competitors make the Bora™ Ultra™ Two the go-to wheel for the podium. The Bora™ Ultra™ Two wheelset is available also in the Dark Label version.



Rear wheel
Dark label



Front wheel
Bright label



QUICK RELEASE



Completely redesigned and lighter aerodynamic profile wheel block.

RIM



Full carbon high profile for 50mm tubular

SPOKES



Spokes with aerodynamic profile: provides the maximum aerodynamic penetration. Reduces aerodynamic drag saving rider energy.

HUB



Carbon fibre hub: provides a high degree of lateral stiffness and reduces weight to the minimum.

CULT™: the combination of the highest quality ceramic bearings with housing in special Cronitect® steel. Nine times smoother than the standard system. Eliminates oxidation and maintains performance over time.

Cup and cone bearings: easy bearing adjustment.

Oversized flange: greater torsional stiffness and greater reactivity.

Aluminium axle

Exclusive rim printing system:

rim painting no longer required. The weight is greatly reduced and the surface is free from imperfections.

Brake pads made especially for carbon wheels:

the new blend increases the brake performance on both dry and wet surfaces without increasing the wear and tear on the pad.

RDB™ Rim Dynamic Balance

Exclusive G3™ spoke pattern:

perfect balance of the spoke tensions on both sides of the wheel. Reduces stress, increases transversal rigidity and the transmission of power to the wheel. G3™ eliminates vibrations even with "heavy" cyclists.

Self-locking aluminium nipples

BORA™ ULTRA™ 35

Tubular: 1215 g

NEW



The new Bora™ Ultra™ 35 is perhaps the most versatile wheel in the line-up and offers serious performance advantages in every situation. Light enough to climb with the best, reactive enough to please the strongest sprinter and efficient enough to shave seconds on the flats this wheel does it all. Increased stiffness, lower aerodynamic resistance and increased stability in crosswind situations all in a 1215 g package. To ensure optimum braking performance in all conditions Campagnolo® has developed the 3Diamant™ surface treatment which, using advanced machinery and diamond tipped precision tools, creates the most surefooted braking surface available. Bora™ Ultra™ 35: Total Performance.

Rear wheel
Dark label

Front wheel
Bright label



QUICK RELEASE



Completely redesigned and lighter aerodynamic profile wheel block.

BORA™ ONE

Tubular: 1350 g

The legendary Bora™ quality and performance is not just for the pros. Engineers at the Campy Tech Lab™ developed the Bora™ One to offer the same performance in a more accessible package. Only available for tubular tires, this carbon fiber wheelset with its aerodynamic design, incredible handling and high-speed design is sure to boost your performance whether it be on the toughest mountain curves or the fastest flats.

Rear wheel
Dark label

Front wheel
Bright label



QUICK RELEASE



Completely redesigned and lighter aerodynamic profile wheel block.

RIM



Full carbon high profile for 35mm tubular: extremely limited weight. The highest degree of lateral stiffness and reactivity of the wheel.



3Diamant™ - brake surface treatment: using advanced machinery and state of the art diamond tipped precision tools, eliminates imperfections. This new process eliminates the "breaking-in" period, improves braking performance under both wet and dry conditions and creates a more linear and smooth overall braking performance.

Brake pads made especially for carbon wheels

Dynamic balancing on the rim

SPOKES



Aerodynamic profile in steel: ensuring the maximum aerodynamic penetration and, thanks to the material employed, lower weight and greater reactivity.



Exclusive G3™ spoke pattern: perfect balance of the spoke tensions on both sides of the wheel. Reduces stress, increases transversal rigidity and the transmission of power to the wheel. G3™ eliminates vibrations even with "heavy" cyclists.

Self-locking aluminium nipples

HUBS



Carbon fibre hub: provides a high degree of lateral stiffness and reduces weight to the minimum.



Oversized flange: greater torsional stiffness and greater reactivity.

CULT™: the combination of the highest quality ceramic bearings and housing in special Cronitect™ steel. Nine times smoother than the standard system.

Cup and cone bearings

Aluminium axle

RIM



Full carbon high profile for 50mm tubular: provides the maximum aerodynamic penetration. Extremely limited weight. The highest degree of lateral stiffness and reactivity of the wheel.



Exclusive rim printing system: rim painting no longer required. The weight is greatly reduced and the surface is free from imperfections.

Brake pads made especially for carbon wheels

RDB™ Rim Dynamic Balance: the new blend increases the brake performance on both dry and wet surfaces without increasing the wear and tear on the pad. For a more modular and more secure stop.

SPOKES



Spokes anti-rotation system™: allows the spokes to maintain the best aerodynamic position.



Exclusive G3™ spoke pattern: perfect balance of the spoke tensions on both sides of the wheel. Reduces stress, increases transversal rigidity and the transmission of power to the wheel. G3™ eliminates vibrations even with "heavy" cyclists.

Spokes with aerodynamic profile

HUB



Oversized flange: greater torsional stiffness and greater reactivity.



Aluminium hub

Cup and cone bearings: easy bearing adjustment – reduces possible bearing play – precision operation – maintains performance over time.

Aluminium axle: reduces the weight of the wheel.

BORA™ ONE 35

Tubular: 1255 g

NEW

The new Bora™ One 35 offers serious performance advantages in all conditions making it the obvious choice for those wanting a do-it-all wheel that does it all very well.

Light, reactive, stiff and aerodynamic the Bora™ One 35 is the one wheel that is perfect for any race in any condition. Add in the new 3Diamant™ braking surface and you have a no-compromise elite level race wheel.

Rear wheel
Dark label



Front wheel
Bright label



QUICK RELEASE



Completely redesigned and lighter aerodynamic profile wheel block.

RIM



Full carbon high profile for 35mm tubular: extremely limited weight. The highest degree of lateral stiffness and reactivity of the wheel.



3Diamant™ - brake surface treatment: using advanced machinery and state of the art diamond tipped precision tools, eliminates imperfections. This new process eliminates the "breaking-in" period, improves braking performance under both wet and dry conditions and creates a more linear and smooth overall braking performance.

Brake pads made especially for carbon wheels

RDB™ Rim Dynamic Balance

SPOKES



Spokes anti-rotation system™: allows the spokes to maintain the best aerodynamic position.



Exclusive G3™ spoke pattern: perfect balance of the spoke tensions on both sides of the wheel. Reduces stress, increases transversal rigidity and the transmission of power to the wheel. G3™ eliminates vibrations even with "heavy" cyclists.

Spokes with aerodynamic profile

HUB



Oversized flange: greater torsional stiffness and greater reactivity.



Aluminium hub

Cup and cone bearings: easy bearing adjustment – reduces possible bearing play – precision operation – maintains performance over time.

Aluminium axle: reduces the weight of the wheel.

HYPERON™ ULTRA™ TWO

Clincher: 1345 g | Tubular: 1231 g



Accelerate on every incline, take on the longest climbs and have no fear of crosswinds with the Hyperon™ Ultra™ Two.

The low-profile full-carbon wheelset that the professional athlete has turned to time and time again. CULT™ bearings that are 9 times smoother than traditional bearings, extremely lightweight and incredibly stiff this wheelset is the embodiment of performance. Available in both tubular and clincher versions.

Rear wheel
tubular



Front wheel



QUICK RELEASE



Completely redesigned and lighter aerodynamic profile wheel block.

RIM



Full carbon: extremely reduced drag. A high lateral rigidity value and responsiveness to the wheel.

Exclusive rim printing system

Brake pads made especially for carbon wheels

RDB™ Rim Dynamic Balance: exclusive system that assures perfect balancing of the rim even at high speeds. Moulded into the rim itself. (tubular version)

Spokes Dynamic Balance: exclusive system that assures perfect balancing of the rim even at high speeds. Moulded into the rim itself. (clincher version)

SPOKES



Steel, aerodynamic spokes: allows for the high degree of air penetration.

HUB



Carbon fibre hub: provides a high degree of lateral stiffness and reduces weight to the minimum.



Oversized flange (clincher version): greater torsional stiffness and greater reactivity.

CULT™: the combination of the highest quality ceramic bearings and housing in special Cronitect® steel. Nine times smoother than the standard system.

Cup and cone bearings



BULLET™ ULTRA™

Clincher: 1590 g



Campagnolo® performance and quality in an ALuminum- Carbon construction. The Bullet™ Ultra™ offers serious performance advantages for the expert rider while including an aluminum braking surface. Special aluminum-carbon construction method coupled with an oversize hub, G3™ spoke lacing pattern and DRSC™ (Directional Rim-Spoke Coupling) system makes for an explosive wheelset that is both responsive and precise. Superior quality bearings also ensure efficiency and smooth functionality. Available in both "Dark" and "Bright" versions.

Rear wheel
Bright label



Front wheel
Dark label

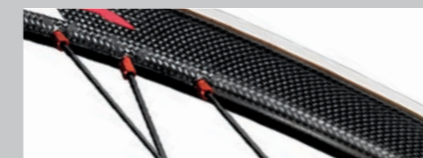


QUICK RELEASE



Completely redesigned and lighter aerodynamic profile wheel block.

RIM



Exclusive molding system for the rim eliminates the need for paint

Dynamic balancing on the rim



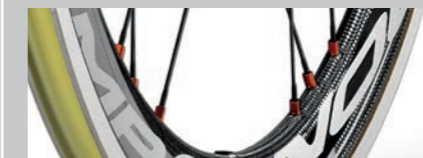
Integrated aluminium/carbon rim structure:

the exclusive coupling system of the aluminium rim and carbon structure makes the rim extremely rigid, it allows for excellent responsiveness levels and durability of the wheel.

MoMag™:

allows the external profile of the rim to be free of holes – increases structural resistance – makes rim tape unnecessary and reduces the weight of the wheel.

SPOKES



G3™ Spoke pattern

Self-locking oversize aluminium nipples



Spokes anti-rotation system:

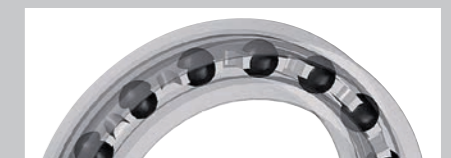
keeps the spokes in the position of maximum aerodynamic penetration.

DRSC™ (Directional Rim-Spoke Coupling):

exclusive rim/spoke coupling system. It allows the rim, spokes, nipples and hub to align properly with the same tensioning value in all areas.

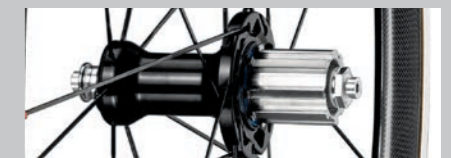
Aerodynamic profile in steel

HUB



2 different bearing options: configure the wheel according to your needs:

1. USB™ ceramic bearings
2. bearings with CULT™ system.



Oversized flange on the drive side:

increases the torsional stiffness, increasing reactivity at each change in rhythm of the pedal stroke.

Aluminium axle

Aluminium hub body

Cup and cone bearings

ALUMINIUM/CARBON WHEELS

Aerodynamic advantages aren't only for professional athletes. They give benefits to all cyclists. With Campagnolo's alu-carbon line of wheels you too can take advantage of aero and use it to slip by the competition.

With a wide variety of profiles perfect for all conditions the Campagnolo® alu-carbon wheel line has you covered no matter the weather, wind, course or type of race. The 50, 80 and 105mm profiles are your best ally in cheating the wind whether you are racing the clock, looking to roll more efficiently in your local granfondo or hammering out the bike leg of the most important triathlon of the season.

The performance profiles are derived from the world-class and widely coveted BORA full carbon line but offer the benefit of an aluminum braking surface.

BULLET™ ULTRA™	81
BULLET™ ULTRA™ 80mm	82
BULLET™ ULTRA™ 105mm	83
BULLET™	84
BULLET™ 80mm	85

BULLET™ ULTRA™ 80mm

Clincher: 1770 g

Grab the handlebars, lower your head and pedal away as the Bullet™ Ultra™ 80mm will take care of the rest. A meticulously studied rim profile and carbon layup was developed to obtain the maximum in aerodynamic performance and responsiveness. Lightweight carbon profile with a surefooted aluminum braking surface make the Bullet™ Ultra™ 80mm a perfect choice both for cheating the wind as well as braking more aggressively.



Rear wheel
Bright label



Front wheel
Dark label

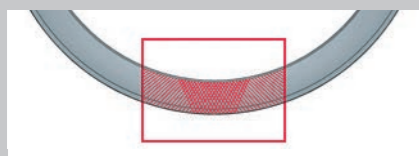


QUICK RELEASE



Completely redesigned and lighter aerodynamic profile wheel block.

RIM



Dynamic balancing on the rim

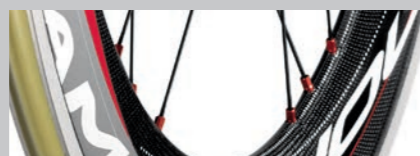
Exclusive molding system for the rim eliminates the need for paint



Integrated aluminium/carbon rim structure:
the exclusive coupling system of the aluminium rim and carbon structure makes the rim extremely rigid, it allows for excellent responsiveness levels and durability of the wheel.

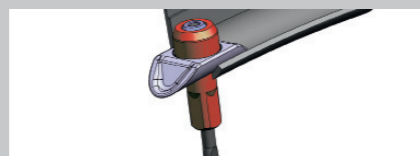
MoMag™:
allows the external profile of the rim to be free of holes – increases structural resistance – makes rim tape unnecessary and reduces the weight of the wheel.

SPOKES



Exclusive G3™ Spoke pattern

Aerodynamic profile in steel

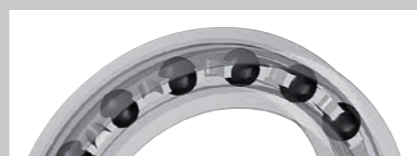


DRSC™ (Directional Rim-Spoke Coupling):
exclusive rim/spoke coupling system. It allows the rim, spokes, nipples and hub to align properly with the same tensioning value in all areas.

Spokes Anti-rotation System™

Self-locking oversize aluminium nipples

HUB



2 different bearing options:
configure the wheel according to your needs:

1. USB™ ceramic bearings
2. bearings with CULT™ system.



Aluminium hub body

Oversized flange on the drive side

Cup and cone bearings:
easy bearing adjustment – reduces possible bearing play – precision operation – maintains performance over time.

Aluminium axle

BULLET™ ULTRA™ 105mm

Clincher: 1960 g

Extreme profile for extreme results. The Bullet™ Ultra™ 105mm is a wind cutting machine and offers the maximum in aero advantage to the cyclist. The rigid construction reduces lateral and torsional flex and, along with the oversize flange and G3™ spoke lacing, offers an impressive power transfer making sure that the energy you produce is productive, not wasted on wheel flex. Available in both Bright and Dark versions, this wheel will take you to the finish line faster and fresher.



CERAMIC ULTIMATE LEVEL TECHNOLOGY
MAXIMUM RESPONSIVENESS FOR MAXIMUM PERFORMANCE

Rear wheel
Bright label



Front wheel
Dark label



QUICK RELEASE



Completely redesigned and lighter aerodynamic profile wheel block.

RIM



Exclusive molding system for the rim eliminates the need for paint

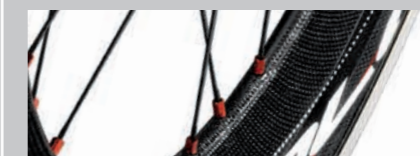
Dynamic balancing on the rim



Integrated aluminium/carbon rim structure:
the exclusive coupling system of the aluminium rim and carbon structure makes the rim extremely rigid, it allows for excellent responsiveness levels and durability of the wheel.

MoMag™:
allows the external profile of the rim to be free of holes – increases structural resistance – makes rim tape unnecessary and reduces the weight of the wheel.

SPOKES



G3™ spoke pattern

Self-locking oversize aluminium nipples

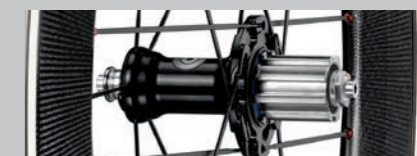


Spokes Anti-Rotation System:
keeps the spokes in the position of maximum aerodynamic penetration.

DRSC™ (Directional Rim-Spoke Coupling):
exclusive rim/spoke coupling system. It allows the rim, spokes, nipples and hub to align properly with the same tensioning value in all areas.

Aerodynamic profile in steel

HUB



Oversized flange on the drive side:
increases the torsional stiffness, increasing reactivity at each change in rhythm of the pedal stroke.



Aluminium hub body

Aluminium axle

Cup and cone bearings

Ball bearings with CULT™ technology:
the combination between the highest quality ceramic bearings and housing in special Cronitect™ steel. CULT™ makes the wheel nine times smoother than the standard system of steel ball bearings.

BULLET™

Clincher: 1755 g

Campagnolo enthusiasts have been waiting for this wheel for a long time. Their wait has been rewarded with a product that definitely exceeds all expectations. Indeed Bullet™ is not only an attractive design: Behind their confident and aggressive design and graphics, there is also "top-class" performance. A carbon wheel with all the benefits of the aluminium braking track: responsive and agile when needed, it can also be comfortable and "docile" on every kind of track.

Rear wheel



Front wheel



QUICK RELEASE



Completely redesigned and lighter wheel block Steel spine and eccentric, lever with drill lightening and aluminum die.

RIM



Integrated aluminium/carbon rim structure: the exclusive coupling system of the aluminium rim and carbon structure makes the rim extremely rigid, it allows for excellent responsiveness levels and durability of the wheel.

Exclusive molding system for the rim eliminates the need for paint

Dynamic balancing on the rim

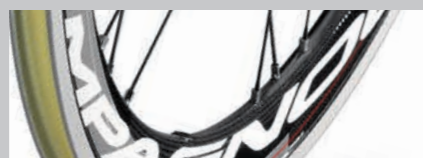
MoMag™: allows the external profile of the rim to be free of holes – increases structural resistance – makes rim tape unnecessary and reduces the weight of the wheel.

SPOKES



Spokes Anti-rotation System™

Self-locking nipples: it allows to maintain the right tension of the spokes and does not require any maintenance.



G3™ Spoke pattern

DRSC™ (Directional Rim-Spoke Coupling): exclusive rim/spoke coupling system. It allows the rim, spokes, nipples and hub to align properly with the same tensioning value in all areas.

Aerodynamic profile in steel

HUB



Aluminium hub body: gives the wheel a high degree of lateral stiffness and reduces weight to the minimum.



Oversized flange on the drive side: increases the torsional stiffness, increasing reactivity at each change in rhythm of the pedal stroke.

BULLET™ 80mm

Clincher: 1930 g

Pure speed. The 80 mm rim cuts through the air like a knife and the km/h increase at every pedal stroke. The special structure of the aluminium and carbon rim gives Bullet™ an extreme rigidity that instantly turns into power and responsiveness. With an impressive and distinctive design, thanks to Bullet™ your bike will have a new look, turning into a true machine against time.

Rear wheel



Front wheel

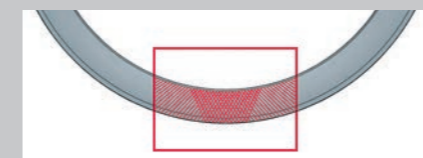


QUICK RELEASE



Completely redesigned and lighter wheel block.

RIM



Dynamic balancing on the rim

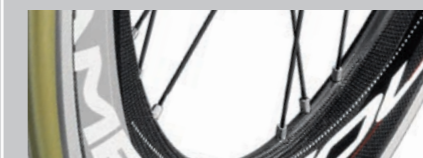
Exclusive molding system for the rim eliminates the need for paint



Integrated aluminium/carbon rim structure: the exclusive coupling system of the aluminium rim and carbon structure makes the rim extremely rigid, it allows for excellent responsiveness levels and durability of the wheel.

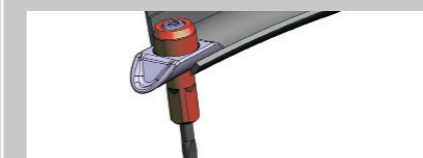
MoMag™: allows the external profile of the rim to be free of holes – increases structural resistance – makes rim tape unnecessary and reduces the weight of the wheel.

SPOKES



G3™ Spoke pattern

Self-locking nipples: it allows to maintain the right tension of the spokes and does not require any maintenance.



DRSC™ (Directional Rim-Spoke Coupling): exclusive rim/spoke coupling system. It allows the rim, spokes, nipples and hub to align properly with the same tensioning value in all areas.

Spokes anti-rotation system

Aerodynamic profile in steel

HUB



Oversized flange on the drive side: increases the torsional stiffness, increasing reactivity at each change in rhythm of the pedal stroke.



Aluminium hub body: gives the wheel a high degree of lateral stiffness and reduces weight to the minimum.



SHAMAL™ ULTRA™

2-Way Fit™: 1440 g | Clincher: 1425 g | Tubular: 1425 g



MEGA-G3

2-WAY FIT



Always staying ahead of the pack.

As in the 2-Way Fit™ version, the Shamal™ Ultra™ wheels for tubular or clincher, roll to the starting line with the best performance ever. Mega-G3™ and the oversized flange make this wheel extremely quick off the line and reactive, featuring a full 17% increase in reactivity over the previous version! This incredible improvement in performance, along with the extreme smoothness of the ceramic ball bearings, will enable you to transfer all the power of your pedal stroke when accelerating on level ground as well as in explosive sprints or a climb. The Shamal™ Ultra™ clincher is available in the Dark and Bright Label versions.

Rear wheel
Dark label



Front wheel
Bright label



QUICK RELEASE



Steel spine and eccentric, lever with drill lightening and aluminum die.

RIM



Toroidal milling:
reduces the peripheral weight of the rim – makes the wheel extremely reactive.

Dynamic Balance™



2-Way Fit™ profile:
allows you to use either the classic clincher or the innovative tubeless tire.

Ultra-Fit™:

easy tire mounting – maximum safety – less friction – less energy dispersion – improved performance.

MoMag™: allows the external profile of the rim to be free of holes.

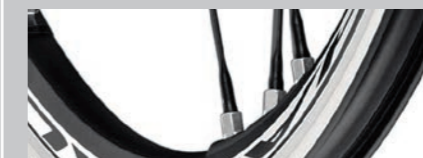
Differentiated rim height:
26mm at the front; 30mm at the rear.

SPOKES



Spokes Anti-rotation System™:

Aluminium nipples



Exclusive Mega-G3™ spoke pattern:
perfect balance of the spoke tensions on both sides of the wheel. Reduces stress, increases transversal rigidity and the transmission of power to the wheel. G3™ eliminates vibrations even with "heavy" cyclists.

Aero spokes in aluminium:
maximum aerodynamic penetration - lower weight and greater reactivity.

HUB



Oversized flange:
increases the torsional stiffness, increasing reactivity at each change of pace of the cyclist.



Carbon fibre hub body:
high degree of lateral stiffness – reduces the weight to the minimum.

Aluminium axle

USB™ ceramic ball bearings:
reduces friction, provides greater smoothness, and maintains performance over time.

ALUMINIUM WHEELS

Campagnolo® has a long history of producing top quality wheels and this expertise shows up in each and every wheel that bears our name.

The vast selection of aluminum wheels gives you the opportunity to find the solution that is perfect for your riding needs.

From the low profile and extremely lightweight Neutron wheels for the steepest climbs to the Scirocco with its aerodynamic profile that offers stiffness and wind cheating characteristics Campagnolo® aluminum wheels have you covered. From the entry level Khamsin™ to the professional race-ready Shamal™, quality and performance are guaranteed.

Setting this range apart are the exclusive G3™ spoke layout and the use of a standard tire, as well as the innovative 2-Way Fit™ profile for the Shamal™, Eurus™ and Zonda™ that permits the use of tubeless tires on the same rim.

SHAMAL™ ULTRA™	87
EURUS™	88
ZONDA™	89
SCIROCCO™ 35mm	90
VENTO™ ASYMMETRIC™	91
KHAMSIN™ ASYMMETRIC™	92
NEUTRON™ ULTRA™	93

EURUS™

2-Way Fit™: 1485 g | Clincher: 1465 g

The Eurus™ wheel was designed to be both extremely durable and high performance. Lightweight design ready for any course and sturdy construction ready for the toughest terrain make this wheelset an easy choice. Thanks to the oversized flange and innovative Mega-G3™ technology, Eurus™ wheels have made a true leap to become, alongside the Shamal™ Ultra, a reference point for top and aluminum wheels.



MEGA G3

2-WAY FIT

Rear wheel



Front wheel



QUICK RELEASE



Steel spine and eccentric, lever with drill lightening and aluminum die.

RIM



Toroidal milling

Differentiated rim height:

26mm at the front; 30mm at the rear.

2-Way Fit™ profile:

allows you to use either the classic clincher or the innovative tubeless tire.

Ultra-Fit™:

easy tire mounting – maximum safety – less friction – less energy dispersion – improved performance.

MoMag™:

allows the external profile of the rim to be free of holes – increases structural resistance – makes rim tape unnecessary and reduces the weight of the wheel.

Dynamic Balance™

SPOKES



Spokes anti-rotation system:

keeps the spokes in the position of maximum aerodynamic penetration.



Exclusive Mega-G3™ spoke pattern:

perfect balance of the spoke tensions on both sides of the wheel. Reduces stress, increases transversal rigidity and the transmission of power to the wheel. Mega-G3™ eliminates vibrations even with "heavy" cyclists.

Aero spokes in aluminium

Aluminium nipples

HUB



Oversized flange:

increases the torsional stiffness, increasing reactivity at each change of pace of the cyclist.



Aluminium axle:

reduces the weight of the wheel.

Aluminium hub body:

provides a high degree of lateral stiffness.

ZONDA™

2-Way Fit™: 1570 g | Clincher: 1550 g

The introduction of Mega-G3™ technology in addition to an oversized flange make the Zonda™ wheelset a benchmark for its price point as it offers greater torsional and lateral stiffness which translates to increased power transfer. A solid wheel ready for racing the Zonda™ is ready to perform. Available also in 2-Way Fit™ this wheelset offers an added degree of versatility allowing you to choose between clincher and tubeless tires.



MEGA G3

2-WAY FIT

Rear wheel



Front wheel



QUICK RELEASE



Completely redesigned and lighter wheel block.

RIM



MoMag™:

allows the external profile of the rim to be free of holes – increases structural resistance – makes rim tape unnecessary and reduces the weight of the wheel.



Milled rim:

reduces the peripheral weight of the rim and makes the wheel extremely reactive.

Differentiated rim height:

26mm at the front to provide optimal handling; 30mm at the rear for transmitting all your power to the wheel.

2-Way Fit™ profile

Ultra-Fit™

Dynamic Balance™

SPOKES



Spokes anti-rotation system

Exclusive Mega-G3™ spoke pattern:

perfect balance of the spoke tensions on both sides of the wheel. Reduces stress, increases transversal rigidity and the transmission of power to the wheel. Mega-G3™ eliminates vibrations even with "heavy" cyclists.

Front:

16 spoke variable profile Aero radials in stainless steel.

Rear:

21 spoke variable profile Aero in stainless steel with doubling on the cassette side.

HUB



Oversized flange Mega-G3™:

increases the torsional stiffness, increasing reactivity at each change of pace of the cyclist.



Aluminium hub body:

provides a high degree of lateral stiffness.

Aluminium axle:

reduces the weight of the wheel.

SCIROCCO™ 35mm

Clincher: 1725 g

Introduced last season, the new 35mm profile of the Scirocco™ offers aerodynamic benefits in a lightweight aluminum construction. A versatile 35mm profile provides for aero advantages with low cross wind interference making this wheel the perfect all-conditions solution. Technologically advanced design and profile with an aluminum braking surface make the Scirocco™ ready for any situation.

MEGA G3

Rear wheel



Front wheel



QUICK RELEASE

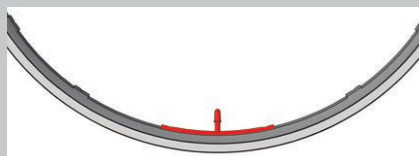


Completely redesigned and lighter aerodynamic profile wheel block.

RIM



35 mm profile for a standard tyre: translates into good penetration while being extremely easy to handle even in a cross wind.



Dynamic Balance™: every point of the rim is counter-balanced by an equal weight on the opposite side. Maximum stability of the wheel even at high speeds.

SPOKES



Front: 16 spoke variable profile Aero radials in stainless steel.
Rear: 21 spoke variable profile Aero in stainless steel with doubling on the cassette side.



Exclusive Mega-G3™ spoke pattern: perfect balance of the spoke tensions on both sides of the wheel. Reduces stress, increases transversal rigidity and the transmission of power to the wheel. Mega-G3™ eliminates vibrations even with "heavy" cyclists.

Aerodynamic profile in steel

HUB



Aluminium hub: high side stiffness yet with low weight.



Oversize flange Mega-G3™ cassette side: increases torsional stiffness, greater reactivity with each change in the cyclist's pace.

Aluminium axle: reduces wheel weight.

VENTO™ ASYMMETRIC

Clincher: 1640 g **NEW**

The redesigned VENTO™ ASYMMETRIC takes the same qualities that have made the Vento™ wheel so popular in the past and takes this wheelset to the next level. The new design in addition to the asymmetric rear rim profile offers notable performance increases in terms of both increased lateral and torsional rigidity as well as increased reactivity. New design allows for more homogenous spoke tensions and makes for a sturdier, higher performing wheelset. A race ready wheelset with guaranteed Campagnolo® quality makes the Vento™ Asymmetric a solid choice for any cyclist.

MEGA G3

Rear wheel
Mega-G3™



Front wheel



Rear wheel
Radial lacing pattern

RIM



Differentiated rim height: 24 mm at the front to provide optimal handling; 27,5 mm at the rear for transmitting all your power to the wheel.



New asymmetric rim profile: asymmetrical rear rim profile allows for better balancing of spoke tensions between drive and non drive side, giving better symmetry to an asymmetric component. Increased efficiency and reactivity are sure to be noted.

Dynamic Balance™: every point of the rim is counter-balanced by an equal weight on the opposite side. Maximum stability of the wheel even at high speeds.

SPOKES



Available in two versions of rear wheel:
- radial lacing pattern of spokes
- exclusive Mega-G3™ spoke pattern: perfect balance of the spoke tensions on both sides of the wheel. Reduces stress, increases transversal rigidity and the transmission of power to the wheel. Mega-G3™ eliminates vibrations even with "heavy" cyclists.

Steel spokes with variable thickness: maximum aerodynamic penetration and stability at high speeds.

HUB



Oversized flange: increases the torsional stiffness, increasing reactivity at each change of pace of the cyclist.



Aluminium axle: reduces the weight of the wheel.

Aluminium hub body: provides a high degree of lateral stiffness.



KHAMSIN™ ASYMMETRIC

Clincher: 1750 g

NEW

The redesigned Khamsin™ Asymmetric represents the entry level for Campagnolo® wheels only because of its fantastic pricing. With advanced characteristics such as Mega-G3™ spoke lacing patterns, oversized flange and Spoke Dynamic Balance™ technology it is clear that this wheel is a step above its competition. Campy Tech Lab™ engineers have pushed the quality of this wheel even further incorporating an asymmetric rear rim that, when coupled with Mega-G3™ lacing provides increased performance in terms of lateral and torsional rigidity as well as reactivity. Available in both Mega-G3™ and traditional lacing patterns, the Khamsin™ Asymmetric permits all cyclists with the opportunity to experience Campagnolo® quality and performance.

Rear wheel
Mega-G3™

Front wheel

Rear wheel
radial lacing pattern

RIM

**Differentiated rim height:**

24 mm at the front to provide optimal handling; 27,5 mm at the rear for transmitting all your power to the wheel.

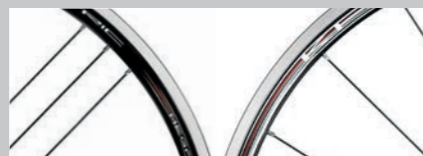
**New asymmetric rim profile:**

asymmetrical rear rim profile allows for better balancing of spoke tensions between drive and non drive side, giving better symmetry to an asymmetric component. Increased efficiency and reactivity are sure to be noted.

Dynamic Balance™:

every point of the rim is counter-balanced by an equal weight on the opposite side. Maximum stability of the wheel even at high speeds.

SPOKES

**Available in two versions of rear wheel:**
- radial lacing pattern of spokes
- exclusive Mega-G3™ spoke pattern:

perfect balance of the spoke tensions on both sides of the wheel. Reduces stress, increases transversal rigidity and the transmission of power to the wheel. Mega-G3™ eliminates vibrations even with "heavy" cyclists.

Straight-head spoke:

maximum stiffness of the wheel – maintains the spoke tension and long-lasting performance.

HUB

**Oversized flange:**

increases the torsional stiffness, increasing reactivity at each change of pace of the cyclist.

**Aluminium axle:**

reduces the weight of the wheel.

Sealed bearings:

maintains performance over time – longer bearing life.



NEUTRON™ ULTRA™

Clincher: 1470 g

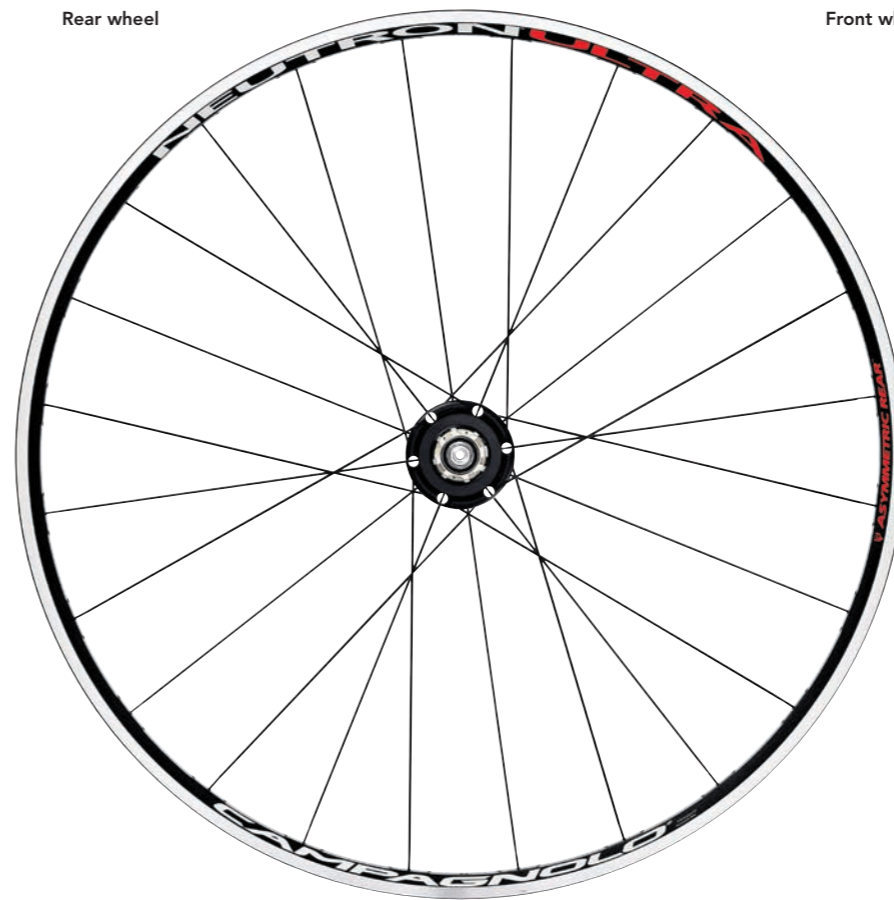
Classic. And never skips a beat.

The Neutron™ Ultra™ are now a well-established symbol of success for Campagnolo® wheels.

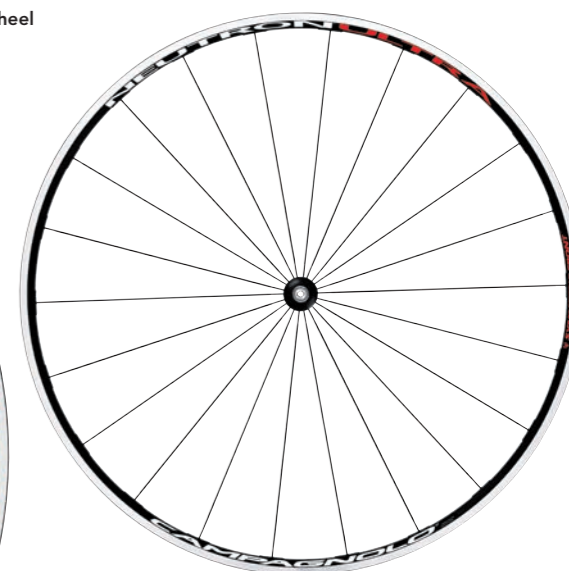
Sought after by professionals and amateur cyclists alike, its characteristics are inimitable. Super lightweight on inclines and extremely reliable; they can be responsive when called upon, or comfortable against the hard pavement, even after hours in the saddle.

The Neutron™ Ultra™ encompasses everything a cyclist requires.

Rear wheel



Front wheel

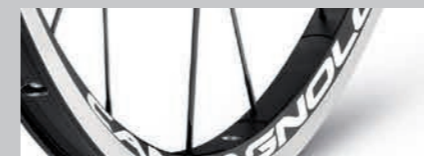


QUICK RELEASE



Steel spine and eccentric, lever with drill lightening and aluminum die.

RIM

**The exclusive geometry of the polygonal rim:**

allows for an elastic rim, which is both comfortable and extremely responsive at the same time.

**Rear rim with an asymmetrical drilling:**

allows for a perfect alignment of the nipples and hub for better spoke tension, leaving no weak points.

Milled, low-profile rim:

reduces the peripheral weight of the rim, and makes the wheel responsive and fast, especially in up-hill rides.

SPOKES

**Straight-head steel spokes in variable sections:**

maximum wheel torsional stiffness. Spoke tension is maintained and guaranteed performance with the best aerodynamics. Stability even at high speeds.

HUB

**Carbon fibre hub body:**

high degree of lateral stiffness – reduces the weight to the minimum.

**Oversized flange:**

increases the torsional stiffness, increasing reactivity at each change of pace of the cyclist.

Cup and cone bearings:

easy bearing adjustment – reduces possible bearing play – precision operation – maintains performance over time.



TECH DATA

Over the course of the previous pages in this catalog you can find a great deal of general information regarding every Fulcrum product. However, if you need more specific information and technical data we have compiled an even greater resource in the following section.

Should you need yet more information please visit:
www.campagnolo.com

Please note that we reserve the right to change products, surface finish and specifications at any moment without prior notice.

ELECTRONIC DRIVETRAINS
MECHANICAL DRIVETRAINS
WHEELS

114

120

134

WHEELS TECHNICAL SPECIFICATIONS

NOMINAL WEIGHT (g)*	RIM MATERIAL	RIM SECTION: HEIGHT/WIDTH - mm (NOMINAL)	ULTRA-FIT™	ASYMMETRICAL HOLES	REQUIRES RIM TAPE	RIM FINISHING	NUMBER OF SPOKES	DYNAMIC BALANCE	SPOKES MATERIAL	SPOKE TYPE	DIFFERENTIAL SPOKES R/L	ULTRALINEAR™ /DRSC™ GEOMETRY	NUT/NIPPLE MATERIAL	O.L.D. (mm)	HUB BODY MATERIAL	CUPS & CONES BEARINGS	BEARINGS VERSION	HUB FINISHING	SPOKE ANTI-ROTATION SYSTEM	COMPATIBILITY
---------------------	--------------	--	------------	--------------------	-------------------	---------------	------------------	-----------------	-----------------	------------	-------------------------	------------------------------	---------------------	-------------	-------------------	-----------------------	------------------	---------------	----------------------------	---------------

ROAD

CARBON WHEELS

BORA™ ULTRA™ TT front tub.	975	carbon	D/20		B				carbon					130		•	C			9/10/11
BORA™ ULTRA™ 80 front tub.	715	carb	80/20		B/D		16	RDB	SS	AE DB		UL	alu	100	carb	•	C	blk/carb		9/10/11
BORA™ ULTRA™ 80 rear tub.	825	carb	80/20		B/D		18/G3™	RDB	SS	AE DB		UL	alu	130	carb	•	C	blk/carb		9/10/11
BORA™ ULTRA™ 80 rear tub. (HG)	864	carb	80/20		B/D		18/G3™	RDB	SS	AE DB		UL	alu	130	carb	•	C	blk/carb		9/10/11
BORA™ ULTRA™ Two front tub.	565	carb	50/20		B/D		18	RDB	SS	AE DB		UL	alu	100	carb	•	C	carb		9/10/11
BORA™ ULTRA™ Two rear tub.	745	carb	50/20		B/D		21/G3™	RDB	SS	AE DB		UL	alu	130	carb	•	C	blk/carb		9/10/11
BORA™ ULTRA™ Two rear tub. (HG)	784	carb	50/20		B/D		21/G3™	RDB	SS	AE DB		UL	alu	130	carb	•	C	blk/carb		9/10/11
BORA™ ULTRA™ 35 front tub.	530	carb	35/20		B/D		18	RDB	SS	AE DB		UL	alu	100	carb	•	C	blk/carb	•	9/10/11
BORA™ ULTRA™ 35 rear tub.	685	carb	35/20		B/D		21/G3™	RDB	SS	AE DB		UL	alu	130	carb	•	C	blk/carb	•	9/10/11
BORA™ ULTRA™ 35 rear tub. (HG)	724	carb	35/20		B/D		21/G3™	RDB	SS	AE DB		UL	alu	130	carb	•	C	blk/carb	•	9/10/11
BORA™ One front tub.	590	carb	50/20		B/D		18	RDB	SS	AE DB		UL	alu	100	alu	•	S	black	•	9/10/11
BORA™ One rear tub.	760	carb	50/20		B/D		21/G3™	RDB	SS	AE DB		UL	alu	130	alu	•	S	black	•	9/10/11
BORA™ One rear tub. (HG)	799	carb	50/20		B/D		21/G3™	RDB	SS	AE DB		UL	alu	130	alu	•	S	black	•	9/10/11
BORA™ One 35 front tub.	550	carb	35/20		B/D		18	RDB	SS	AE DB		UL	alu	100	alu	•	S	black	•	9/10/11
BORA™ One 35 rear tub.	705	carb	35/20		B/D		21/G3™	RDB	SS	AE DB		UL	alu	130	alu	•	S	black	•	9/10/11
BORA™ One 35 rear tub. (HG)	744	carb	35/20		B/D		21/G3™	RDB	SS	AE DB		UL	alu	130	alu	•	S	black	•	9/10/11
HYPERON™ ULTRA™ Two front cl.	580	carb	19/20		B	•	22	RDB	SS	AE DB		UL	alu	100	carb	•	C	carb		9/10/11
HYPERON™ ULTRA™ Two rear cl.	765	carb	21/20		B	•	24	RDB	SS	AE DB	•	UL	alu	130	carb	•	C	blk/carb		9/10/11
HYPERON™ ULTRA™ Two rear cl. (HG)	804	carb	21/20		B	•	24	RDB	SS	AE DB	•	UL	alu	130	carb	•	C	blk/carb		9/10/11
HYPERON™ ULTRA™ Two front tub.	536	carb	19/20		B		22	RDB	SS	AE DB		UL	alu	100	carb	•	C	carb		9/10/11
HYPERON™ ULTRA™ Two rear tub.	695	carb	21/20		B		24	RDB	SS	AE DB	•	UL	alu	130	carb	•	C	blk/carb		9/10/11
HYPERON™ ULTRA™ Two rear tub. (HG)	734	carb	21/20		B		24	RDB	SS	AE DB	•	UL	alu	130	carb	•	C	blk/carb		9/10/11

KEY

DB=Butted - AE=Aero - UAE=Ultra Aero - SS=Stainless steel - BR=Brass - S=steel - U=USB™ - C=CULT™ - SDB=Spoke Dynamic Balance - RDB=Rim Dynamic Balance
 B=Bright - D=Dark

* Average weight - does not include the quick-release and the rim-tape.

WHEELS TECHNICAL SPECIFICATIONS

NOMINAL WEIGHT (g*)	RIM MATERIAL	RIM SECTION: HEIGHT/WIDTH - mm (NOMINAL)	ULTRA-FIT™	LABELS	REQUIRES RIM TAPE	RIM FINISHING	NUMBER OF SPOKES	DYNAMIC BALANCE	SPOKES MATERIAL	SPOKE TYPE	DIFFERENTIAL SPOKES R/L	ULTRALINEAR™ /DRSC™ GEOMETRY	NUT/NIPPLE MATERIAL	O.L.D. (mm)	HUB BODY MATERIAL	CUPS & CONES BEARINGS	BEARINGS VERSION	HUB FINISHING	SPOKE ANTI-ROTATION SYSTEM	COMPATIBILITY
---------------------	--------------	--	------------	--------	-------------------	---------------	------------------	-----------------	-----------------	------------	-------------------------	------------------------------	---------------------	-------------	-------------------	-----------------------	------------------	---------------	----------------------------	---------------

ROAD

ALUMINIUM - CARBON WHEELS

BULLET™ ULTRA™ front cl.	727	alu/carb	50/20,5		B/D	carb	18	RDB	SS	AE DB		DRSC™	alu	100	alu	•	U/C	black	•	
BULLET™ ULTRA™ rear cl.	863	alu/carb	50/20,5		B/D	carb	21/G3™	RDB	SS	AE DB		DRSC™	alu	130	alu	•	U/C	black	•	9/10/11
BULLET™ ULTRA™ rear cl. (HG)	902	alu/carb	50/20,5		B/D	carb	21/G3™	RDB	SS	AE DB		DRSC™	alu	130	alu	•	U/C	black	•	9/10/11
BULLET™ ULTRA™ 80mm front cl.	815	alu/carb	80/20,5		B/D	carb	16	RDB	SS	AE DB		DRSC™	alu	100	alu	•	U/C	black	•	
BULLET™ ULTRA™ 80mm rear cl.	955	alu/carb	80/20,5		B/D	carb	18/G3™	RDB	SS	AE DB		DRSC™	alu	130	alu	•	U/C	black	•	9/10/11
BULLET™ ULTRA™ 80mm rear cl. (HG)	994	alu/carb	80/20,5		B/D	carb	18/G3™	RDB	SS	AE DB		DRSC™	alu	130	alu	•	U/C	black	•	9/10/11
BULLET™ ULTRA™ 105mm front cl.	910	alu/carb	105/20,5		B/D	carb	16	RDB	SS	AE DB		DRSC™	alu	100	alu	•	C	black	•	
BULLET™ ULTRA™ 105mm rear cl.	1050	alu/carb	105/20,5		B/D	carb	18/G3™	RDB	SS	AE DB		DRSC™	alu	130	alu	•	C	black	•	9/10/11
BULLET™ ULTRA™ 105mm rear cl. (HG)	1089	alu/carb	105/20,5		B/D	carb	18/G3™	RDB	SS	AE DB		DRSC™	alu	130	alu	•	C	black	•	9/10/11
BULLET™ front cl.	785	alu/carb	50/20,5		B	carb	18	RDB	SS	AE DB		DRSC™	BR	100	alu		S	black	•	
BULLET™ rear cl.	970	alu/carb	50/20,5		B	carb	21/G3™	RDB	SS	AE DB		DRSC™	BR	130	alu		S	black	•	9/10/11
BULLET™ rear cl. (HG)	1009	alu/carb	50/20,5		B	carb	21/G3™	RDB	SS	AE DB		DRSC™	BR	130	alu		S	black	•	9/10/11
BULLET™ 80mm front cl.	865	alu/carb	80/20,5		B	carb	16	RDB	SS	AE DB		DRSC™	BR	100	alu		S	black	•	
BULLET™ 80mm rear cl.	1065	alu/carb	80/20,5		B	carb	18/G3™	RDB	SS	AE DB		DRSC™	BR	130	alu		S	black	•	9/10/11
BULLET™ 80mm rear cl. (HG)	1104	alu/carb	80/20,5		B	carb	18/G3™	RDB	SS	AE DB		DRSC™	BR	130	alu		S	black	•	9/10/11

KEY

DB=Butted - AE=Aero - UAE=Ultra Aero - SS=Stainless steel - BR=Brass - S=steel - U=USB™ - C=CULT™ - SDB=Spoke Dynamic Balance - RDB=Rim Dynamic Balance
 B=Bright - D=Dark

* Average weight - does not include the quick-release and the rim-tape.

WHEELS TECHNICAL SPECIFICATIONS

NOMINAL WEIGHT (g)*	RIM MATERIAL	RIM SECTION: HEIGHT/WIDTH - mm (NOMINAL)	ULTRA-FIT™	LABELS	REQUIRES RIM TAPE	RIM FINISHING	NUMBER OF SPOKES	DYNAMIC BALANCE	SPOKES MATERIAL	SPOKE TYPE	DIFFERENTIAL SPOKES R/L	ULTRALINEAR™ /DRSC™ GEOMETRY	NUT/NIPPLE MATERIAL	O.L.D. (mm)	HUB BODY MATERIAL	CUPS & CONES BEARINGS	BEARINGS VERSION	HUB FINISHING	SPOKE ANTI-ROTATION SYSTEM	COMPATIBILITY
---------------------	--------------	--	------------	--------	-------------------	---------------	------------------	-----------------	-----------------	------------	-------------------------	------------------------------	---------------------	-------------	-------------------	-----------------------	------------------	---------------	----------------------------	---------------

ROAD

ALUMINIUM WHEELS

SHAMAL™ ULTRA™ front cl.	605	alu	24/20,5		B/D	black	16	RDB	alu	AE DB		UL	alu	100	alu/carb	•	U	blk/carb		9/10/11
SHAMAL™ ULTRA™ rear cl.	820	alu	30/20,5		B/D	black	21/MG3™	RDB	alu	AE DB		UL	alu	130	alu/carb	•	U	blk/carb		9/10/11
SHAMAL™ ULTRA™ rear cl. (HG)	859	alu	30/20,5		B/D	black	21/MG3™	RDB	alu	AE DB		UL	alu	130	alu/carb	•	U	blk/carb		9/10/11
SHAMAL™ ULTRA™ front tub.	612	alu	24,5/20		B	black	16	RDB	alu	AE DB		UL	alu	100	alu/carb	•	U	blk/carb		9/10/11
SHAMAL™ ULTRA™ rear tub.	813	alu	28,5/20		B	black	21/MG3™	RDB	alu	AE DB		UL	alu	130	alu/carb	•	U	blk/carb		9/10/11
SHAMAL™ ULTRA™ rear tub. (HG)	852	alu	28,5/20		B	black	21/MG3™	RDB	alu	AE DB		UL	alu	130	alu/carb	•	U	blk/carb		9/10/11
SHAMAL™ ULTRA™ 2-Way Fit™ front	615	alu	24/20,5	•	B	black	16	RDB	alu	AE DB		UL	alu	100	alu/carb	•	U	blk/carb		9/10/11
SHAMAL™ ULTRA™ 2-Way Fit™ rear	825	alu	28/20,5	•	B	black	21/MG3™	RDB	alu	AE DB		UL	alu	130	alu/carb	•	U	blk/carb		9/10/11
SHAMAL™ ULTRA™ 2-Way Fit™ rear (HG)	864	alu	28/20,5	•	B	black	21/MG3™	RDB	alu	AE DB		UL	alu	130	alu/carb	•	U	blk/carb		9/10/11
EURUS™ front cl.	640	alu	24/20,5		B	black	16	RDB	alu	AE DB		UL	alu	100	alu	•	S	slv/blk		9/10/11
EURUS™ rear cl.	825	alu	30/20,5		B	black	21/G3™	RDB	alu	AE DB		UL	alu	130	alu	•	S	slv/blk		9/10/11
EURUS™ rear cl. (HG)	864	alu	30/20,5		B	black	21/G3™	RDB	alu	AE DB		UL	alu	130	alu	•	S	slv/blk		9/10/11
EURUS™ 2-Way Fit™ front	645	alu	24/20,5	•	B	black	16	RDB	alu	AE DB		UL	alu	100	alu	•	S	black		9/10/11
EURUS™ 2-Way Fit™ rear	840	alu	28/20,5	•	B	black	21/MG3™	RDB	alu	AE DB		UL	alu	130	alu	•	S	black		9/10/11
EURUS™ 2-Way Fit™ rear (HG)	879	alu	28/20,5	•	B	black	21/MG3™	RDB	alu	AE DB		UL	alu	130	alu	•	S	black		9/10/11
ZONDA™ front cl.	670	alu	24/20,5		B	black	16	RDB	SS	AE DB		UL	BR	100	alu	•	S	black	•	9/10/11
ZONDA™ rear cl.	880	alu	30/20,5		B	black	21/G3™	RDB	SS	AE DB		UL	BR	130	alu	•	S	black	•	9/10/11
ZONDA™ rear cl. (HG)	924	alu	30/20,5		B	black	21/G3™	RDB	SS	AE DB		UL	BR	130	alu	•	S	black	•	9/10/11
ZONDA™ 2-Way Fit™ front	680	alu	24/20,5	•	B	black	16	RDB	SS	AE DB		UL	BR	100	alu	•	S	black	•	9/10/11
ZONDA™ 2-Way Fit™ rear	890	alu	30/20,5	•	B	black	21/G3™	RDB	SS	AE DB		UL	BR	130	alu	•	S	black	•	9/10/11
ZONDA™ 2-Way Fit™ rear (HG)	939	alu	30/20,5	•	B	black	21/G3™	RDB	SS	AE DB		UL	BR	130	alu	•	S	black	•	9/10/11
SCIROCCO™ 35mm front cl.	788	alu	35/20		B	black	16	RDB	SS	AE DB			alu	100	alu		S	black	•	9/10/11
SCIROCCO™ 35mm rear cl.	937	alu	35/20		B	black	21/MG3™	RDB	SS	AE DB			alu	130	alu		S	black	•	9/10/11
SCIROCCO™ 35mm rear cl. (HG)	1004	alu	35/20		B	black	21/MG3™	RDB	SS	AE DB			alu	130	alu		S	black	•	9/10/11
VENTO™ ASYMMETRIC front cl.	750	alu	24/20,5		B	• black	18		SS	AE DB			alu	100	alu		S	black		9/10/11
VENTO™ ASYMMETRIC rear cl.	890	alu	27,5/20,5		B	• black	20		SS	AE DB			alu	130	alu		S	black		9/10/11
VENTO™ ASYMMETRIC rear cl. (HG)	929	alu	27,5/20,5		B	• black	20		SS	AE DB			alu	130	alu		S	black		9/10/11
VENTO™ ASYMMETRIC front cl.	750	alu	24/20,5		B	• black	18		SS	AE DB			alu	100	alu		S	black		9/10/11
VENTO™ ASYMMETRIC G3™ rear cl.	910	alu	27,5/20,5		B	• black	24/G3™		SS	AE DB			alu	130	alu		S	black		9/10/11
VENTO™ ASYMMETRIC G3™ rear cl. (HG)	949	alu	27,5/20,5		B	• black	24/G3™		SS	AE DB			alu	130	alu		S	black		9/10/11
KHAMSIN™ ASYMMETRIC front cl.	815	alu	24/20,5		B	• black	18		S				BR	100	alu		S	black		9/10/11
KHAMSIN™ ASYMMETRIC rear cl.	935	alu	27,5/20,5		B	• black	20		S/SS				BR	130	alu		S	black		9/10/11
KHAMSIN™ ASYMMETRIC rear cl. (HG)	974	alu	27,5/20,5		B	• black	20		S/SS				BR	130	alu		S	black		9/10/11
KHAMSIN™ ASYMMETRIC front cl.	815	alu	24/20,5		B	• black	18		S				BR	100	alu		S	black		9/10/11
KHAMSIN™ ASYMMETRIC G3™ rear cl.	975	alu	27,5/20,5		B	• black	24/G3™		S/SS				BR	130	alu		S	black		9/10/11
KHAMSIN™ ASYMMETRIC G3™ rear cl. (HG)	1014	alu	27,5/20,5		B	• black	24/G3™		S/SS				BR	130	alu		S	black		9/10/11
NEUTRON™ ULTRA™ front cl.	630	alu	18/20,5		B	• black	22		SS	AE DB	•	UL	alu	100	alu/carb	•	S	blk/carb		9/10/11
NEUTRON™ ULTRA™ rear cl.	840	alu	18/20,5		B	• black	24		SS	AE DB	•	UL	alu	130	alu/carb	•	S	blk/carb		9/10/11
NEUTRON™ ULTRA™ rear cl. (HG)	879	alu	18/20,5		B	• black	24		SS	AE DB	•	UL	alu	130	alu/carb	•	S	blk/carb		9/10/11

KEY

DB=Butted - AE=Aero - UAE=Ultra Aero - SS=Stainless steel - BR=Brass - S=steel - U=USB™ - C=CULT™ - SDB=Spoke Dynamic Balance - RDB=Rim Dynamic Balance
B=Bright - D=Dark

* Average weight - does not include the quick-release and the rim-tape.

WHEELS TECHNICAL SPECIFICATIONS

	NOMINAL WEIGHT (g)*	RIM MATERIAL	RIM SECTION: HEIGHT/WIDTH - mm (NOMINAL)	ULTRA-FIT™	LABELS	REQUIRES RIM TAPE	RIM FINISHING	NUMBER OF SPOKES	DYNAMIC BALANCE	SPOKES MATERIAL	SPOKE TYPE	DIFFERENTIAL SPOKES R/L	ULTRALINEAR™ /DRSC™ GEOMETRY	NUT/NIPPLE MATERIAL	O.L.D. (mm)	HUB BODY MATERIAL	CUPS & CONES BEARINGS	BEARINGS VERSION	HUB FINISHING	SPOKE ANTI-ROTATION SYSTEM	COMPATIBILITY
--	---------------------	--------------	--	------------	--------	-------------------	---------------	------------------	-----------------	-----------------	------------	-------------------------	------------------------------	---------------------	-------------	-------------------	-----------------------	------------------	---------------	----------------------------	---------------

TRIATHLON - TIME TRIAL																					
BORA™ ULTRA™ TT rear road	975	carbon	D/20		B					carbon					130		•	C			9/10/11

CYCLOCROSS																					
KHAMSIN™ ASYMMETRIC CX front cl.	815	alu	24/20,5		B	•	black	18		S				BR	100	alu		S	black		
KHAMSIN™ ASYMMETRIC CX rear cl.	935	alu	27,5/20,5		B	•	black	20		S/SS				BR	130	alu		S	black		9/10/11
KHAMSIN™ ASYMMETRIC CX rear cl. (HG)	974	alu	27,5/20,5		B	•	black	20		S/SS				BR	130	alu		S	black		9/10/11
SCIROCCO™ 35mm CX front cl.	778	alu	24/20,5		B	•	black	20	SDB	SS	AE DB			alu	100	alu		S	black		
SCIROCCO™ 35mm CX rear cl.	937	alu	24/20,5		B	•	black	27/G3™	SDB	SS	AE DB			alu	130	alu		S	black		9/10/11
SCIROCCO™ 35mm CX rear cl. (HG)	1004	alu	24/20,5		B	•	black	27/G3™	SDB	SS	AE DB			alu	130	alu		S	black		9/10/11
BORA™ One CX front tub.	590	carb	50/20		B		carb	18	RDB	SS	AE DB			alu	100	alu	•	S	black	•	
BORA™ One CX rear tub.	760	carb	50/20		B		carb	21/G3™	RDB	SS	AE DB			alu	130	alu	•	S	black	•	9/10/11
BORA™ One CX rear tub. (HG)	799	carb	50/20		B		carb	21/G3™	RDB	SS	AE DB			alu	130	alu	•	S	black	•	9/10/11
BORA™ One 35 CX front tub.	550	carb	35/20		B		carb	18	RDB	SS	AE DB		UL	alu	100	alu	•	S	black	•	9/10/11
BORA™ One 35 CX rear tub.	705	carb	35/20		B		carb	21/G3™	RDB	SS	AE DB		UL	alu	130	alu	•	S	black	•	9/10/11
BORA™ One 35 CX rear tub. (HG)	744	carb	35/20		B		carb	21/G3™	RDB	SS	AE DB		UL	alu	130	alu	•	S	black	•	9/10/11

PISTA																					
GHIBLI™ front track	955	alu	D/19							aramid					100	alu	•	S			
GHIBLI™ rear track	995	alu	D/19							aramid					120	alu	•	S			
PISTA™ front tub.	995	alu	38/20		B		black	20		SS	AE			alu	100	alu	•	S	black		
PISTA™ rear tub.	1040	alu	38/20		B		black	24		SS				alu	120	alu	•	S	black		

KEY

DB=Butted - AE=Aero - UAE=Ultra Aero - SS=Stainless steel - BR=Brass - S=steel - U=USB™ - C=CULT™ - SDB=Spoke Dynamic Balance - RDB=Rim Dynamic Balance
 B=Bright - D=Dark

* Average weight - does not include the quick-release and the rim-tape.

CAMPAGNOLO® SERVICE CENTER

The Service Center is the reference point for all Campagnolo® dealers and its aim is to provide an adequate after-sales service to Campagnolo® users. Service Centers are a territorial extension of Campagnolo srl and work exclusively with dealers, no exceptions made. The Service Centers handle two activities: After-sales Service and Spare Parts Service.

The After-sales Service provides technical assistance for products under guarantee or otherwise, enabling cyclists to enjoy the first-class characteristics of Campagnolo® products for long, without forfeiting safety, performance and endurance. The Spare Parts Service handles the distribution of spare parts. Campagnolo® possesses a large inventory of spare parts and is able to replenish its distribution system adequately in relatively short times.

We therefore advise you to refer to your Campagnolo® dealer for any expert action required by your bikes - these dealers are the only ones supported by the constant, skilled collaboration of Campagnolo® Service Centers.

SERVICE CENTERS

ITALY - CENTRAL SERVICE CENTER
CAMPAGNOLO SRL HEADQUARTERS
Via della Chimica, 4 - 36100 VICENZA
Tel. +39-0444-255600
Fax: +39-0444-225606
E-mail: service.campagnolo@campagnolo.com

AUSTRALIA
DE GRANDI CYCLE AND SPORTS
419 Moorabool Street 3220
GEELONG (VICTORIA)
Tel. +61 3 5221 5099
E-mail: shane@degrandi.com.au

BIKE SPORTZ IMPORTS
23C & 23D Industrial Drive
BRAESIDE 3195 (VICTORIA)
Tel. +61 3 95872344
E-mail: jnunan@bikesportz.com.au

AUSTRIA - GERMANY
CAMPAGNOLO DEUTSCHLAND GMBH
Alte Garten 62
51371 LEVERKUSEN
Tel. +49-214-206953-20
Fax: +49-214-206953-15

BENELUX
INTERNATIONAL CYCLE CONNECTION
B.V. - I.C.C.
Communicatielaan 5A
4538 BV TERNEUZEN NETHERLANDS
Tel. +31 (0)115 649321
Fax: +31 (0)115 649110
E-mail: info@i-c-c.nl
Web: www.i-c-c.nl

BRAZIL
DIPSA-Distribuidora de Pecas e Acessorios Ltda.
Rua Barao do Rego Barros 510
CEP. 04512-041
São Paulo - SP - Brazil
Tel. (11) 5093-4364
E-mail: dipsa@dipsa.com.br

CANADA
CYCLES MARINONI INC
1067, Levis - LACHENAIE
QUEBEC J6W 4L2
Tel. +1-450-4717133
Fax: +1-450-4719887

CHINA - HONG KONG
IRON ORE CO. LTD.
3/F, WING WAH INDUSTR. BUILDING
137-143 YEUNG UK ROAD TSUEN WAN,
NEW TERRITORIES
HONG KONG
Tel. 852 3576/3839
Fax +852 3576/3837

CHEUNG KEE CYCLE CO
Number 1b, Fuk Yip Building No. 12
Kik Yeung Road Yuen Long
N.T. HONG KONG
Tel. +85 224746794
E-mail: sales@ckcycle.com

CHILE
RAFAEL BURGOS S.A.
Arturo Prat, 1032
SANTIAGO
Tel. +56 2/5200600
Fax +56 2/6342390

CYPRUS - GREECE
RACING CYCLES LTD
38 ATHALASSIS AVENUE, OFF.101
STROVLOS - NICOSIA
CYPRUS
Tel. +35 722210104
Fax +35722210114

CZECH REPUBLIC
SIRER s.r.o.
Vit. Halka 368
26601 BEROUN
Tel. 00420775590956
Fax: 00420608241691
E-mail: campagnolo@sirer.cz
Web: www.campagnolo-sirer.cz

DENMARK
PEAK BIKE APS
Svejsegangen 3-1 TH
2690 Karlslunde
DENMARK
Tel. +45-4492 2800
E-mail: info@peakbike.dk

FINLAND
VELOSPORT KY
Mäkelänkatu 95
00610 HELSINKI, FINLAND
FI Finlandia
Tel. +358 9795468
Fax +358 9795498

FRANCE
CAMPAGNOLO FRANCE SAS
ZA du Tissot
42530 ST GENEST - LERPT
Tel. +33-477-556305
Fax: +33-477-556345

GREECE
CYCLES FIDUSA - GIORGIO VOYATZIS & CO.
Th. Sofuli 97
85100 RHODOS
Tel. +30-2241 021264
Fax: +30-2241 021519

ACTIVE ZONE NETWORK S.A.
Varis-Koropiou & Makedonias, 2
16672 VARI. ATHENS
Tel. +30-210/9612929
E-mail: info@cyclist.gr

HUNGARY
SILVER BRIDGE BT
Segesvari utca 27
BUDAPEST
Tel. + 36 703846394
E-mail: info@silverbridge.hu

ISRAEL
AMIT LEVINSON LTD
25 Sheshet Hayamim Str. - QIRYAT HAIM
POB 252 ZIP 26101
Tel. +972-4-8405649
Fax: +972-4-8423913

JAPAN
CAMPAGNOLO JAPAN LTD
65 Yoshida-cho, Naka-ku,
YOKOHAMA 231-0041 JAPAN
Tel. +81-45-264-2780
Fax: +81-45-241-8030

NEW ZEALAND
WH WORRALL CO. LTD.
43 Felix St./Penrose - P.O. Box 12481
AUCKLAND
Tel. +64-9-6360641
Fax: +64-9-6360631

POLAND
P.H.U. WERTYKAL S.C.
ul. Slaska 116
32-080 ZABIERZOW
Tel. +48/12/346 16 69
+ 48/604/07 70 94
E-mail: serwis@wertykal.com
Web: www.wertykal.com

TECHNICAL INFORMATION

ITALY (CENTRAL)
Tel. +39-0444-225600
Fax: +39-0444-225400

FRANCE
Tel. +33-477-554449
Fax: +33-477-556345

GERMANY
Tel. +49-214-206953-20
Fax: +49-214-206953-15

SPAIN
Tel. +34-945-217195
Fax: +34-945-217198

U.S.A.
Tel. +1-760-9310106
Fax: +1-760-9310991

JAPAN
Tel. +81-45-264-2780
Fax: +81-45-241-8030

SINGAPORE - MALAYSIA - INDONESIA
TRIMEN VENTURES PTE LTD
1 Bukit Batok Crescent #08-04
WCEGA Plaza
SINGAPORE 658064
Tel. +65-67476448
Fax: +65-67476447

KIAN HONG CYCLE PTE LTD
3 Kaki Bukit Road 1 #B1-05
Eunos Technolink 415935
SINGAPORE
Tel. +65 67495787
E-mail: smiek@khcycle.com.sg

SPAIN
CAMPAGNOLO IBERICA S.L.
Avda. de Los Huetos 46 Pab. 31
01010 VITORIA
Tel. +34-945-217195
Fax: +34-945-217198

SLOVAC REPUBLIC
ZANZO S.R.O.
Kysucky Lieskovec 421
02334 BRATISLAVA
Tel. 00421 245 523721
Fax: 00421 245 249404

SLOVENIA
MAXISPORT D.O.O.
Smartinska cesta 211
1000 LJUBLJANA
Tel. +386 1 541 10 60
Fax: +386 1 541 67 61
E-mail: service@maxisport.si
Web: www.maxisport.si

SOUTH AFRICA
CYCLING J&J (PTY) LTD.
169 Meerlust Street -
Willow Glen PRETORIA
Tel. +27-012-8075570
Fax: +27-012-8074267

SOUTH KOREA
DAEJIN INTERNATIONAL
977-6, DAEJAM-DONG
NAM-GU POHANG
KYOUNGSANGBUK-DO
Tel. +82 54/275.2216
E-mail: info.bianchi@yahoo.co.kr

SOUTH KOREA
DONGJIN IMPORTS CO LTD
560-5 Banghak-Dong Dobong-Gu SEOUL
Tel. +82 2/4997053
E-mail: kenney.dongjin@gmail.com

SWITZERLAND
SWISSBIKE PIERO ZURINO GMBH
Pilatusstr. 4 - 6036 DIERIKON
Tel. +41-41-7485550
Fax: +41-41-7485551

U.G.D. SPORT DIFFUSION S.A.
La Taille - 2053 CERNIER
Tel. +41-32-8536363
Fax: +41-32-8536464

TAIWAN, MAINLAND CHINA
COLMAX INTERNATIONAL LTD
No.70, Taiyi Rd., Rende Dist.,
TAINAN CITY 717, TAIWAN (R.O.C.)
Tel. +886-6-205 5300
Fax: +886-6-205 6901
E-mail: sales@colmax.com.tw
Web: www.colmax.com.tw

THAILAND
UWC LTD
3656/35-36 Green Tower 11th Floor,
RAMA IV RD., KLONGTON, KLONGTOEY
BANGKOK 10110
Tel. +66 23673470
E-mail: kanate@uniwave.net

UNITED KINGDOM
CHICKEN CYCLEKIT
Unit b2, Cherrycourt Way
LU7 4UH BEDFORDSHIRE
Tel. +44 1525 381347
Fax: +44 1525 385361
E-mail: sales@chickencyclekit.co.uk

CYCLE SPORT NORTH LTD
464 Ranglet RoadWalton
PR5 8AR LANCASHIRE
Tel. +44 1772 339220
Fax: +44 1772 339290
E-mail: sales@cyclesportnorth.co.uk
Web: www.csnb2b.co.uk

VELOTECH CYCLING LTD
37 Dingleberry Olney Bucks
MK46 5ES BUCKINGHAMSHIRE
Tel. +44 7533 129435

UNITED KINGDOM
I-RIDE
7-8B Mid Sussex Business Park
Ditchling Common Ind. Est.
Folder Lane East
Ditchling, Sussex
BN6 8SE
Tel. +44 (0) 1444 243000
Fax: +44 (0) 1444 239215
E-mail: service@i-ride.co.uk
info@i-ride.co.uk

UNITED STATES
CAMPAGNOLO NORTH AMERICA INC.
5431 Avenida Encinas, Suite C
CARLSBAD CA 92008
Tel. +1-760-9310106
Fax: +1-760-9310991

OCHSNER INTERNATIONAL INC
246 E. Marquardt Drive - WHEELING
IL. 60090-6430
Tel. +1-847-4658200
Fax: +1-847-4658282

QUALITY BICYCLE PRODUCTS
6400 W. 105th Street
BLOOMINGTON, MN 55438-2554
Tel. +1-952-9419391
Fax: +1-952-9419799

THE HAWLEY COMPANY, INC.
1181 South Lake Drive
LEXINGTON, SC 29073-7744
Tel. +1-803.359.3492 x 192
Fax: +1-803.359.1343

SALES NETWORK

HEADQUARTERS

CAMPAGNOLO S.R.L.

Via della Chimica, 4
36100 Vicenza - ITALY
Tel. +39-0444-225500
Fax: +39-0444-225400
E-mail: sales@campagnolo.com

BRANCH OFFICES

FRANCE

CAMPAGNOLO FRANCE SAS
ZA du Tissot - 42530 St
GENEST - LERPT
Tel. +33-477-556305
Fax: +33-477-556345
E-mail: campagnolo@
campagnolo.fr

GERMANY

CAMPAGNOLO
DEUTSCHLAND GMBH
Alte Garten 62
51371 LEVERKUSEN
Tel. +49-214-206953-0
Fax: +49-214-206953-15
E-mail: campagnolo@
campagnolo.de

JAPAN

CAMPAGNOLO JAPAN LTD
65 Yoshida-cho, Naka-ku,
YOKOHAMA
231-0041
Tel. +81-45-264-2780
Fax: +81-45-241-8030
E-mail: info@campagnolo.jp

SPAIN

CAMPAGNOLO IBERICA S.L.
Avda. de Los Huetos 46. pab,
3-2ª fila
01010 VITORIA
Tel. +34-945-217195
Fax: +34-945-217198
E-mail: campagnolo@
campagnolo.es

TAIWAN

PRIMATEK LTD
No. 4, Gongyequ 10th Rd.,
Nantue Dist.,
TAICHUNG CITY 408 - TAIWAN
(R.O.C.)
Tel. +886-4-23506831
Fax: +886-4-23596764

UNITED STATES

CAMPAGNOLO NORTH
AMERICA INC.
5431 Avenida Encinas, Suite C -
CARLSBAD CA 92008 - U.S.A.
Tel. +1-760-9310106
Fax: +1-760-9310991
E-mail: info@campagnolona.
com

AGENT NETWORK

BENELUX

INTERNATIONAL
CYCLE CONNECTION I.C.C.
Communicatielaan 5A
4538 BV TERNEUZEN
NEDERLANDS
Tel. +31(0)115 649321
Fax: +31(0)115 649110
E-mail: info@i-c-c.nl
Web: www.i-c-c.nl

UNITED KINGDOM

SELECT CYCLE
COMPONENTS
The White House
Main Street
NEWTON NI13 8HN -
ENGLAND
Tel. +44-0780260628
E-mail: rosafio@
selectcyclecomponents.com

SALES NETWORK

ARGENTINA

ANGEL DIAZ
Av. Mosconi 2255
BUENOS AIRES
E-mail: info@rodadosdiaz.com.ar
Tel. +54 1145716481

AUSTRALIA

DE GRANDI CYCLE AND SPORTS
419 Moorabool Street 3220
GEELONG (VICTORIA)
Tel. +61 3 5221 5099
E-mail: shane@degrandi.com.au

BIKE SPORTZ IMPORTS
23C & 23D Industrial Drive
BRAESIDE 3195 (VICTORIA)
Tel. +61 3 95872344
E-mail: jnunan@bikesportz.com.au

AUSTRIA

NSPORTS
HANDELSAGENTUR
ALEXANDER NIEDERSTETTER
Goethestraße 8
6845 Hohenems VORARLBERG
Tel. +43 5576 74015
Fax: +43 5576 74153
E-mail: alexander@nsports.at
Web: www.nsports.at

BELGIUM

BIKES & PARTS ROLAND VERVAET
Klipsenstraat 24 9160 - LOKEREN
Tel. 0032 (0) 93493836
Fax: 0032 (0) 93485148
Web: www.bikes-parts.be

MINERVA N.V.

Koerselsesteenweg 33 3580 - BERIN-
GEN
Tel. 0032 (0) 11457671
Fax: 0032 (0) 11424473
Web: www.minerva-nv.be

VDB PARTS N.V.

Industriepark Noord 24 A 9100 - SINT-
NIKLAAS
Tel. 0032 (0) 37807130
Fax: 0032 (0) 37807144
Web: www.vdbparts.be

BRAZIL

DIPSA
Distribuidora de Pecas e Acessorios
Ltda.
Rua Barao do Rego Barros 510
CEP. 04612-041
São Paulo - SP
Brazil
Tel. (55) (11) 5096-4364
Web: dipsa@dipsa.com.br
E-mail: dipsa@dipsa.com.br

CANADA

CYCLES LAMBERT
1000 rue des Riveurs, Lévis,
QUEBEC G6V 9G3
Tel. 418.835.5659 ext 2279
Fax: 418.835.5322

CANADA

GREAT WESTERN BICYCLE
232 West 7th Ave
VANCOUVER, BC
V5Y 1M1
Tel. 1 877 872 2446
Fax: 1 604 872 0226

MARINONI

1067 Levis
TERREBONNE, QC, Canada
J6W 4L2
Tel. 450.471.7133

CHILE

KEDRUK Y VIROVKO LTDA - KYV
CYCLING
Lo Beltran 1979 Vitacura - 7640541
SANTIAGO CILE
E-mail: info@kyvcycling.cl
Tel. +56 2/9866449

RAFAEL BURGOS S.A.

Arturo Prat, 1032
SANTIAGO
Tel. +56 2/5200600
Fax +56 2/6342390

CHINA - HONG KONG

CHEUNG KEE CYCLE CO
Number 1b, Fuk Yip Building No. 12
Kik Yeung Road - Yuen Long N.T.
HONG KONG
Tel. +85 224746794
E-mail: sales@ckcycle.com

IRON ORE CO LTD

Room 1305, Wang Lung Ind. Bldg
48-56
Wang Lung Street Tsuen Wan
NEW TERRITORY HONG KONG
Tel. +852 3576/3839
E-mail: ccheng@ironorechina.com

THE WING'S COMPANY

1b, Maple Court
222 Fa Yuen St. Mongkok Kowloon
HONG KONG
Tel. +852 23812635
E-mail: the_wings_co@hotmail.com

COLOMBIA

DIEZ EQUIUS S.A.
Calle 12 # Medellín 43F 20
COLOMBIA
Tel. +574 2668380
E-mail: juan.cano@diezequis.com

CZECH REPUBLIC

SIRER s.r.o.
Vit. Halka 368
26601 BEROUN
Tel. 00420775590956
Fax: 00420608241691
E-mail: campagnolo@sirer.cz
Web: www.campagnolo-sirer.cz

DENMARK

PEAKBIKE APS
Svejestegangen 3-1 Th 2690
KARLSLUNDE DENMARK
Tel. +45 4492 2800
E-mail: info@peakbike.dk

ESTONIA

DENARO TEAM
Tammsaare Tee, 62 11316
TALLIN ESTONIA
Tel. +37 25051209
E-mail: miikel@e-bike.ee

FRANCE

CAMPAGNOLO FRANCE
ZA du tissot
42530 SAINT GENEST LERPT
Tel. +33 477 556305
Fax : +33 477 556345

GERMANY

ASTRO Rad + Teile + Zubehör
Angerstraße 4
96231 BAD STAFFELSTEIN
Tel. +49 9573 96030
Fax: +49 9573 96035
E-mail : info@astro-rad.de
Web: http://www.astro-rad.de

CCM-Sport GmbH
Von-Wrangell-Str. 5
53359 RHEINBACH
Tel. +49 2226 90653
Fax: +49 2226 906521
Web: www.ccm-sport.de

DIEGELMANN & JACOBI GmbH

In den Nassen 4
65719 HOFHEIM AM TAUNUS
Tel. +49 6192 206146
Fax: +49 6192 25880
Web: www.diegelmannshop.de

HERMANN HARTJE KG

Deichstraße 120 - 122
273 HOYA
Tel. +49 4251 811-20
Fax: +49 4251 811-159
E-mail: info@hartje.de
Web: www.hartje.de

RA-CO GmbH

Fichtenweg 37
99198 KERSPLEBEN
Tel. +49 36203 6140
Fax: +49 36203 50227
E-mail: service@ra-co.de
Web: www.ra-co.de

RaiKo GmbH

Radsportgroßhandel
Feldstr. 7
53340 MECKENHEIM
Tel. +49 2225/706710
Tel. +49 2225/706711
E-mail: info@raiko.de
Web: www.raiko.de

GERMANY

ENGELBERT WIENER BIKE Parts
GmbH
Max-Planck-Str. 8
97526 SENNFELD
BAYERN
Tel. +49 9721 65010
Fax: +49 9721 650160
Web: www.bike-parts.de

GREECE

ACTIVE ZONE NETWORK S.A.
Varis-Koropiou & Makedonias, 2 16672
Vari,
ATHENS GREECE
Tel. +30 210/9612929
E-mail: info@cyclist.gr

CYCLES FIDUSA

Th. Sofuli 97 85100
RHODOS GREECE
Tel. +30 2241021264
E-mail: fidusagv@otenet.gr

ISRAEL

AMIT LEVINSON LTD
25 Sheshet Hayamim Str. Qiryat Haim
Pob 252
ZIP 26101 ISRAEL
Tel. +972 3 5612520
E-mail: info@amitbike.co.il

ITALY

For information on the distribution
network
in Italy please contact
Campagnolo S.r.l. headquarters

JAPAN

NICHINAO SHOKAI
1-2 Ryutotsudanchi, Kishigaya
SAITAMA, 343-0824 JAPAN
Tel. +81-489-88-6251
Fax: +81-489-88-6254
E-mail: info@nichinao.co.jp

KAWASHIMA CYCLE SUPPLY

3-3-16 Kitasho-cho, Sakai-ku, Sakai
OSAKA 590-0007 JAPAN
Tel. +81-72-238-6126
Fax: +81-72-221-4379
E-mail: info@riogrande.co.jp

DINOSAUR

2-8-15 Kitanoshonishi-machi, Nara-shi
NARA, 630-8452 JAPAN
Tel. +81-742-64-3555
Fax: +81-742-64-3556
E-mail: info@dinosaur-gr.com

YOKOHAMA SANNO SPORTS

242-1 Higashikibougouoka, Asahi-ku
YOKOHAMA, 241-0826 JAPAN
Tel. +81-45-364-3792
Fax: +81-45-362-7916
E-mail: info@sannosports.jp

NETHERLAND

CARD SPORTS
Vaartveld 19
4704 SE - ROSENDAAL
Tel. 0031 (0) 165564241
Fax: 0031 (0) 165564248
Web: www.cardsports.nl

JUNCKER BIKE PARTS

Fokkerstraat 25
3905 KV - VEENENDAAL
Tel. 0031 (0) 318553030
Fax: 0031 (0) 318552111
Web: www.verwimp.nl

LOUIS VERWIMP B.V.

De Vest 21
5555 XL - VALKENSWAARD
Tel. 0031 (0) 402041515
Fax: 0031 (0) 402041585
Web: www.verwimp.nl

TEHAVA INTERNATIONAL

Tomeikerweg 31
6161 RB - GELEEN
Tel. 0031 (0) 464752100
Fax: 0031 (0) 464750424
Web: www.tehava.com

NEW ZEALAND

DE GRANDI CYCLE & SPORTS NZ
LTD.
19 Nuttall Drive 8022
HILLSBOROUGH-CRISTCHURCH
NEW ZEALAND
Tel. +64 33891205
E-mail: jonny@degrandi.co.nz

W.H. WORRALL & CO. LTD.

43 Felix Street Penrose PO box 12481
Auckland New Zealand
Tel. +64 96360641
E-mail: David@worrall.co.nz

NORWAY

RACING DEPOT A/S
Graversveien, 36
SANDNES N-4306 NORWAY
Tel. +47 51686270
E-mail: morten.forus@racingdepot.no
PHILIPPINES
YKK Trading
68-74 Legaspi Street
Neugrütstraße 4 b - 8610 USTER
Tel. +636332.2558853
E-mail: johngm@ykkbikes.com

SINGAPORE - INDONESIA

KIAN HONG CYCLE PTE LTD
3 Kaki Bukit Road 1 #B1-05 Eunos
Technolink
415935 SINGAPORE
Tel. +65 67495787
E-mail: smiek@khcycle.com.sg

TRIMEN VENTURES PTE LTD

1 Butik Batok Crescent #08-04 WCE-
GA Plaza
658064 SINGAPORE
Tel. +65 67476448
E-mail: bryan.chew@pacific.net.sg

SLOVENIA

MAXISPORT d.o.o. Letaliaka c.5 1000
Ljubljana-SLOVENIJA
Tel. +386 1 547 65 00
E-mail: service@maxisport.si

SOUTH AFRICA

RIBBENS INTERNATIONAL CC
169 Meerlust Street - Willow Glen
PRETORIA SOUTH AFRICA
Tel. +27 0128075570
E-mail: jr@jjcycling.co.za

SOUTH KOREA

DAEJIN INTERNATIONAL
977-6, Daejam-Dong, Nam-Gu
Pohang
KYOUNGSANGBUK-DO SOUTH
KOREA
Tel. +82 54/275.2216
E-mail: info.bianchi@yahoo.co.kr

DONGJIN IMPORTS CO LTD

560-5 Banghak-Dong Dobong-Gu
SEOUL SOUTH KOREA
Tel. +82 2/4997053
E-mail: kenney.dongjin@gmail.com

SPAIN

COMET
Pol.Ind. Erratzu S/N
20130 ALTO DE IRURAIN. URNIETA
GUIPUZCOA
Tel. +34-943 330 965
Fax: +34-555 658
E-mail: comet@comet.es

JAIME LLORENTE

Capitan Blanco Argibay 141
28029 MADRID
Tel. +34-91 315 3496
Fax: +34-91 3230652
E-mail: info@jaimelorenste.com

CASA MASFERRER

Pol.Ind,Congost
Avda San Julian S/N
08400 GRANOLLERS BARCELONA
Tel. +34-93 8463 444
Fax: +34-93 846 5355
E-mail: masferrer@casamasferrer.com

SWITZERLAND

GPR AG
Neugrütstraße 4 b - 8610 USTER
Tel. 0041 44 9449393
Fax: 0041 44 9449394

SWISSBIKE PIERO ZURINO GmbH

Pilatusstrasse 4
6063 DIERIKON SWITZERLAND
Tel. +41 41 748 55 50
Fax: +41 41 748 55 56
E-mail: parts@swissbike.net
Web: www.swissbike.net

UGD SPORT DIFFUSION SA

La Taille
2053 CERNIER
Tel. 0041 032 8536363
Fax: 0041 032 8536464
E-mail: info@ugd.ch

TAIWAN - CHINA

COLMAX INTERNATIONAL LTD
No 6 Lane 295 Sec.3 Dongmen Rd
TAINAN CITY TAIWAN
Tel. +886-6-265 6001
Fax: +886-6-265 1388
E-mail: charis@colmax.com.tw
Web: www.colmax.com.tw

THAILAND

UWC LTD
3656/35-36 Green Tower 11th Floor,
Rama Iv Rd.
KLONGTON, KLONGTOEY BAN-
GKOK 10110
THAILAND
Tel. +66 23673470
E-mail: kanate@uniwave.net

UNITED KINGDOM

CYCLESPORT NORTH LTD
464 Rangel Road Walton
PR5 8AR LANCASHIRE UNITED
KINGDOM
Tel. +44 (0) 1772 339220
Fax: +44 (0) 1772 339290
E-mail: sales@cyclesportnorth.co.uk
Web: www.csnb2b.co.uk

I-RIDE.CO.UK

J&B Importers, Inc.
13 Apex Park - Diplocks Way
BN27 3JU EAST SUSSEX UNITED
KINGDOM
Tel. +44 (0) 1323 445155
Fax: +44 (0) 1323 845849
E-mail: campagnoloservice@
jimwalker.co.uk

CHICKEN CYCLEKIT

Unit b2, Cherrycourt Way
LU7 4UH BEDFORDSHIRE UNITED
KINGDOM
Tel. +44 (0) 1525 381347
Fax: +44 (0) 1525 385361
E-mail: sales@chickencyclekit.co.uk

MIKE DIXON IMPORT LTD

115 Newcourt Way
ORMSKIRK L39 2YT
Tel. +44 (0) 1438 798772
E-mail: mdi.ltd@btconnect.com
J.D. WHISKER LTD
Unit 4 , Bridge Gate Centre
WELWYN GARDEN CITY
AL7 1JG
Tel. +44 (0) 1438 798772

U.S.A.

SEATTLE BIKE SUPPLY
7620 S. 192nd Street
KENT, WA 98032
Tel. 1-800-283-2453
Fax: 1-800-955-2453

SINCLAIR IMPORTS

2775 Highway 40 West
P.O. Box 707
VERDI, NV 89439
Tel. (800) 654-8052 ext. 227
Fax: 775-345-6013

U.S.A.

EURO ASIA IMPORTS
3935 Foothill Blvd
LA CRESCENTA, CA 91214 USA
Tel. 818-248-1814
Fax: 818-248-1243

BTI

1216 Mercantile Road
SANTA FE, NEW MEXICO 87507
Tel. 800 558-8324
Fax: 505 473-0011
W. 105th Street • Bloomington •
Minnesota • 55438

QBP

6400 W. 105th Street
BLOOMINGTON, MINNESOTA 55438
Tel. 952.941.9391
Fax: 952.941.9799999391 / 952.941.97 /
952.941.9799

OCHSNER INTERNATIONAL

246 E Marquardt Drive
WHEELING, IL 60090
Tel. (847) 465-8200
Fax: (847) 465-8282

J&B IMPORTS

J&B Importers, Inc.
11925 SW 128th St.
MIAMI, FL 33186
Tel. (305) 238-1866
Fax: 305 235 8056

GITA SPORTING GOODS

12500 Steele Creek Road
CHARLOTTE, NC 28273
Tel. (800) 366-4482
Fax: (704) 588-4322

THE HAWLEY COMPANY

1181 South Lake Drive
LEXINGTON, SC 29073-7744
Tel. 803.359.3492 x149
Fax: 800.822.1985

SECURITY BICYCLE ACCESSORIES

32 Intersection Street
HEMPSTEAD NY 11551
Tel. (800) 645-2990
Fax: (516) 485-6117

Campagnolo

PURE PERFORMANCE

CAMPAGNOLO S.R.L.

Via della Chimica, 4
36100 Vicenza - ITALY
Phone: +39 0444 225500
Fax: +39 0444 225400

www.campagnolo.com

Campagnolo®, Campy™, Super Record™, Record™, Chorus™, Athena™, EPS™, CT™, Centaur™, Veloce™, Mirage™, Xenon™, ESP™, ESP™ ACTUATION SYSTEM™, Ultra-Shift™, Vari-Cushion™, No-Bulge™, OS-Fit™, Ultra-Link™, CULT™, USB™, XPS™, MPS™, Power Torque System™, Power-Shift™, BE 11™, Revolution 11™, Campy Tech Lab™, 2-Way Fit™, Ultra-Fit™ Tubeless, 3Diamant™, Hyperon™, Neutron™, Proton™, Eurus™, Zonda™, Scirocco™, Vento™, Vento Asymmetric™, Bora™, Ghibli™, Pista™, Khamsin™, Khamsin Asymmetric™, Shamal™, Bullet™, Time Trial™, Ergobrain™, Symmetric Action™, Z-shape™, M-brace™, Even-O™, Superlative™, Floating-Link-Action™, HD-Link™, HD-L™, Exa-Drive™, Ultra-Drive™, Pro-Fit™, Pro-Fit PLUS™, Differential brakes™, Threadless™, Hiddenset™, Hiddenset TTC™, TTC™, Ergopower™, BB System™, C10™, C9™, ED™, UD™, Ultra Narrow™, Over-Torque™, UT™, Ultra-Torque™, Over-Torque™ Technology, Ultra-Hollow™, Skeleton™, Quick Shift™, QS™, Escape™, Infinite™, Champ Triple™, Race Triple™, Comp Triple™, HPW™, Mega-G3™, G3™, Grouped Spokes™, DPRO™, Dual Profile™, Ultralinear-Geometry™, Ultralinear™, Differential rims™, Differential spokes™, Ultra™, Ultra Aero™, DRSC™, RDB™, Spokes Anti-Roation System™, Spoke Dynamic Balance™, Comp Ultra™, Comp One™, 3Diamant™, Dynamic Balance™, Full Carbon™, Multidirectional™, Unidirectional™, AC-H™, AC-S™, SC-S™, Big™, Miro™, Pro-Shop™, Tecnologia ed Emozione™ are Campagnolo Srl Trademarks.

Cronitect® is a registered Trademark of Schaeffler Group

QR Code® is registered trademarks of DENSO WAVE INCORPORATED.

Copyright(C) 2000-2010
DENSO WAVE INCORPORATED
All right reserved

Credits:

Graphic concept
CONDENSED srl - www.condensed.it

Photos
Matteo Ganora
Studio Nova
Yuzuru Sunada



